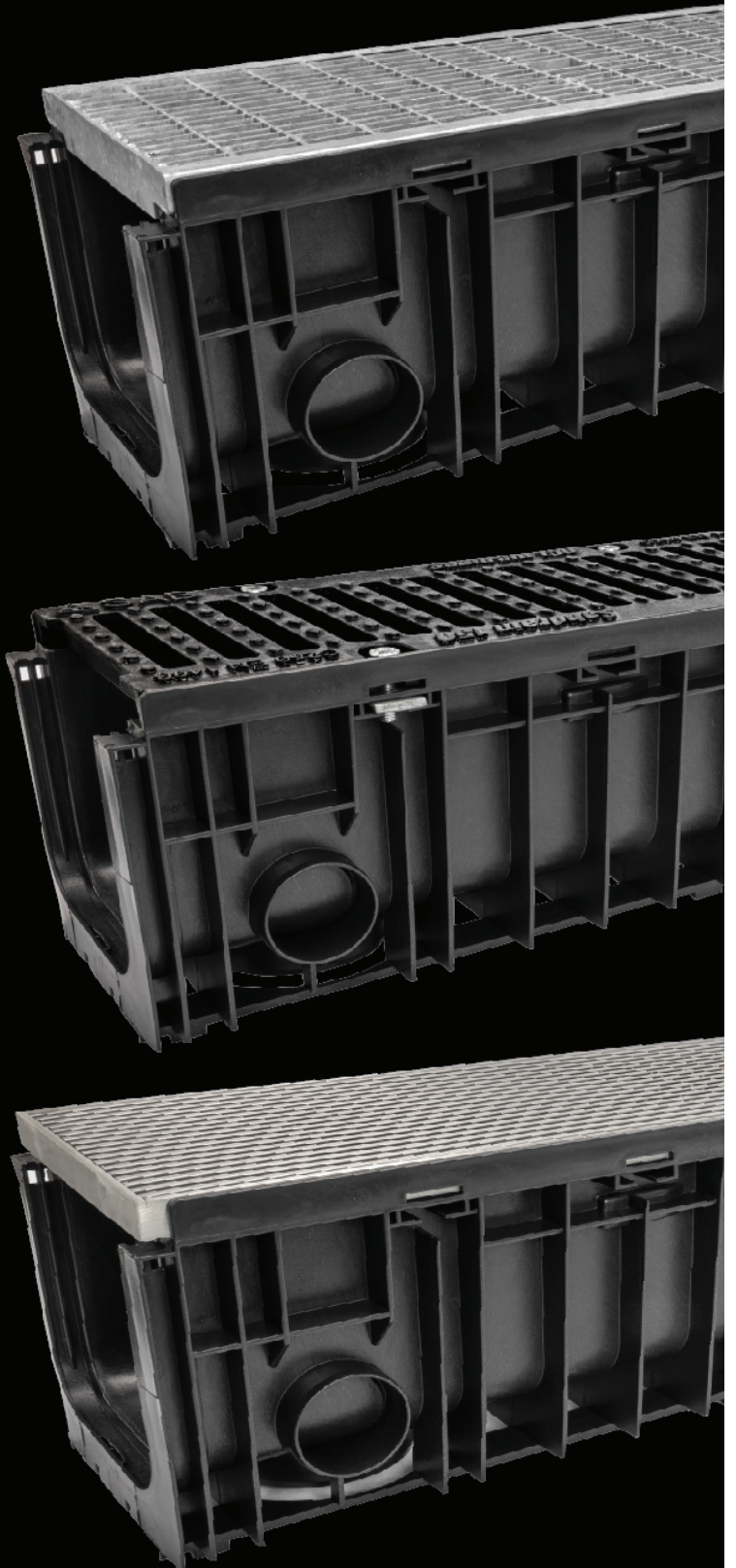
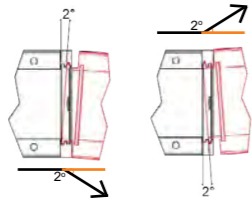


# SABdrain

water drainage systems



# The details that make the difference...



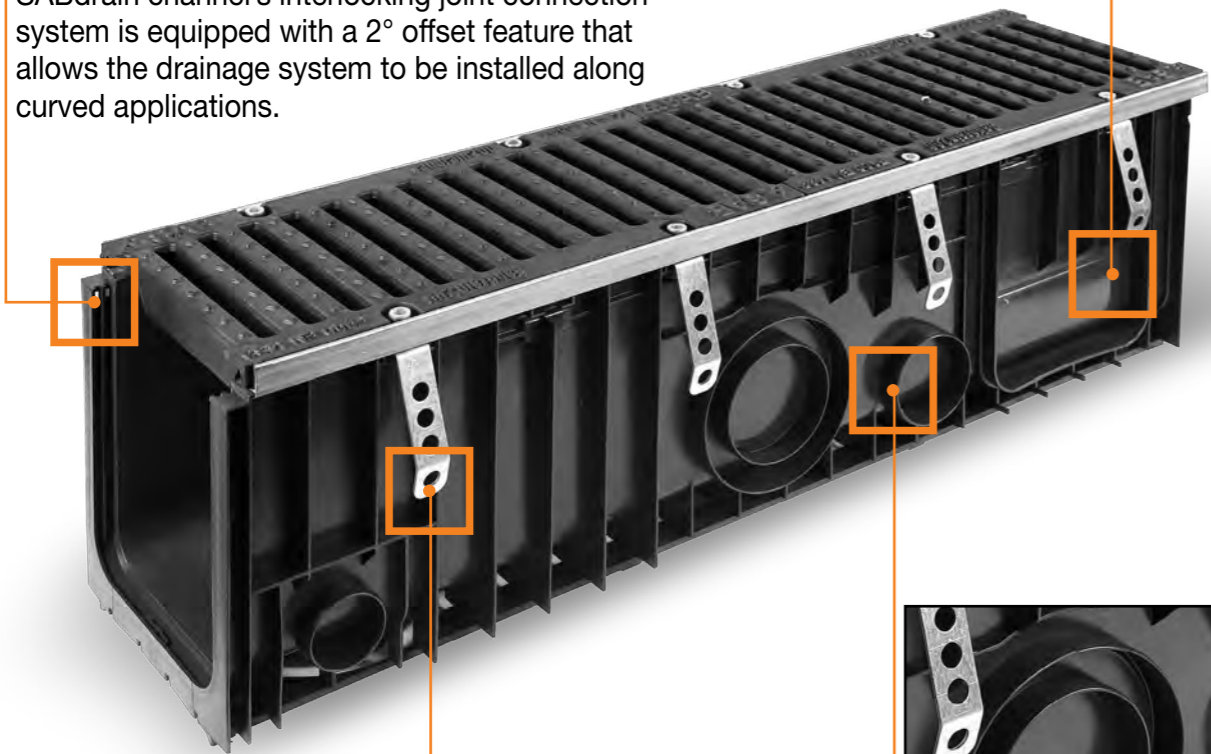
## CHANNEL JOINING SYSTEM

Interlocking joint connection systems to allow an exact fitting & locking together of the channel ends preventing any lateral and vertical displacement. Channels can be easily transported & assembled on site without the need of additional fittings. Each SABdrain channel's interlocking joint connection system is equipped with a 2° offset feature that allows the drainage system to be installed along curved applications.



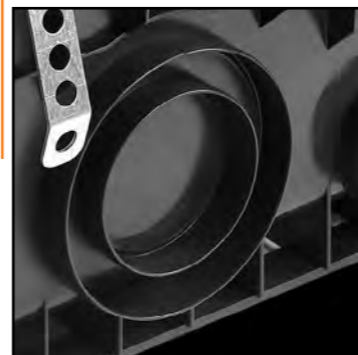
## LATERAL CONNECTION SYSTEM

Preset lateral connection for 90 degree joining of 2 channel units together. Allows right angles, tees & crosses without any additional fittings



## GRATE SECURITY FIXINGS

All SABdrain channels are equipped with security grate locking mechanisms to keep the grates rattle free from vehicular movements & secure from unauthorized access.



## PIPE CONNECTION

Preset pipe connections on the base & side to allow for simple cut out and connection to the stormwater system using standard PVC stormwater fittings.

# Index

CLASS B	CLASS C	Galvanised Grates With Polypropylene Channel	4-9
CLASS C	CLASS G	Cast Iron Grates With Polypropylene Channels	10-21
CLASS A		Stainless Steel Grates With Polypropylene Channels	22-29
CLASS D		Slot Grate With Polypropylene Channels	30-31
CLASS A	CLASS C	Polypropylene Grates With Polypropylene Channels	32-37
CLASS A		Pressed Metal Grates With Polypropylene Channels	38-41
CLASS C	CLASS G	Slope Drain Accessory	42-43
		Accessories	44
		Load Class Guide	45
		Installation	46-47

## QUALITY



## APPROVALS



BUREAU VERITAS

Product approvals



Testing Lab

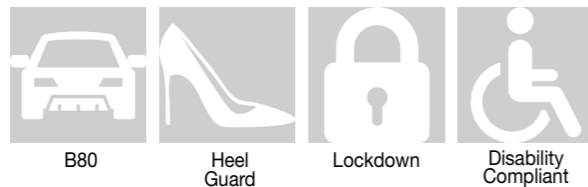
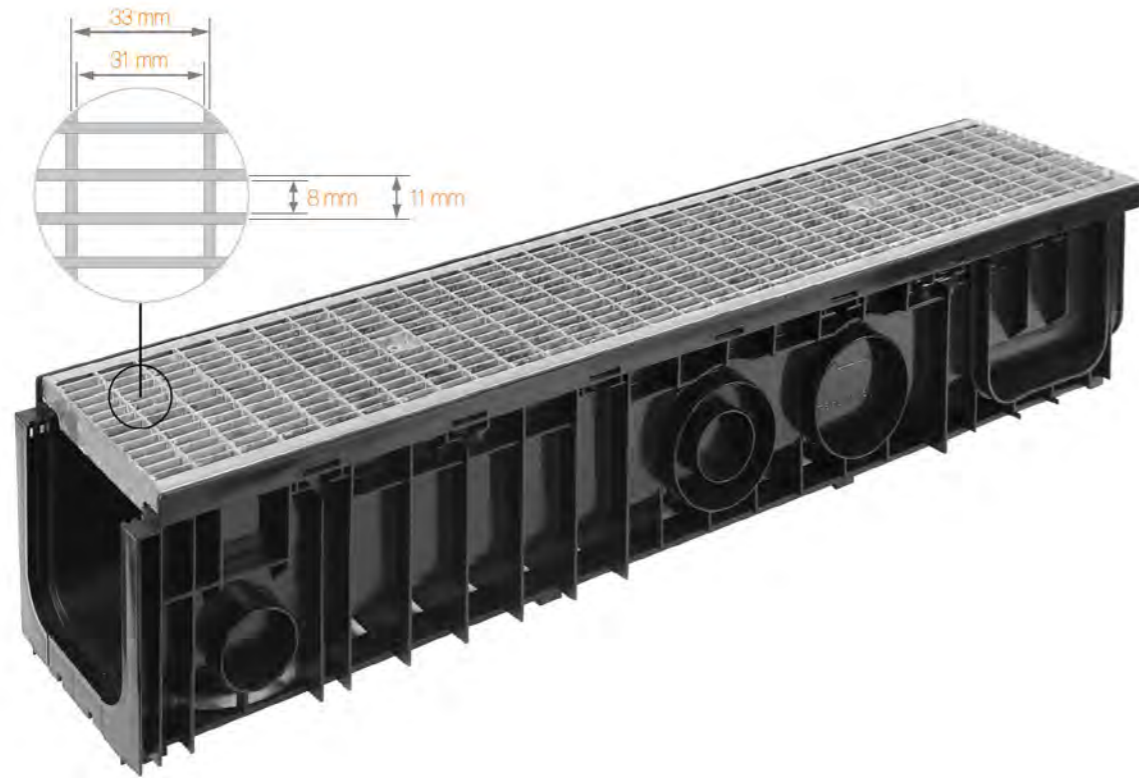


CE mark



# 601

## Galvanised Heel Guard Series

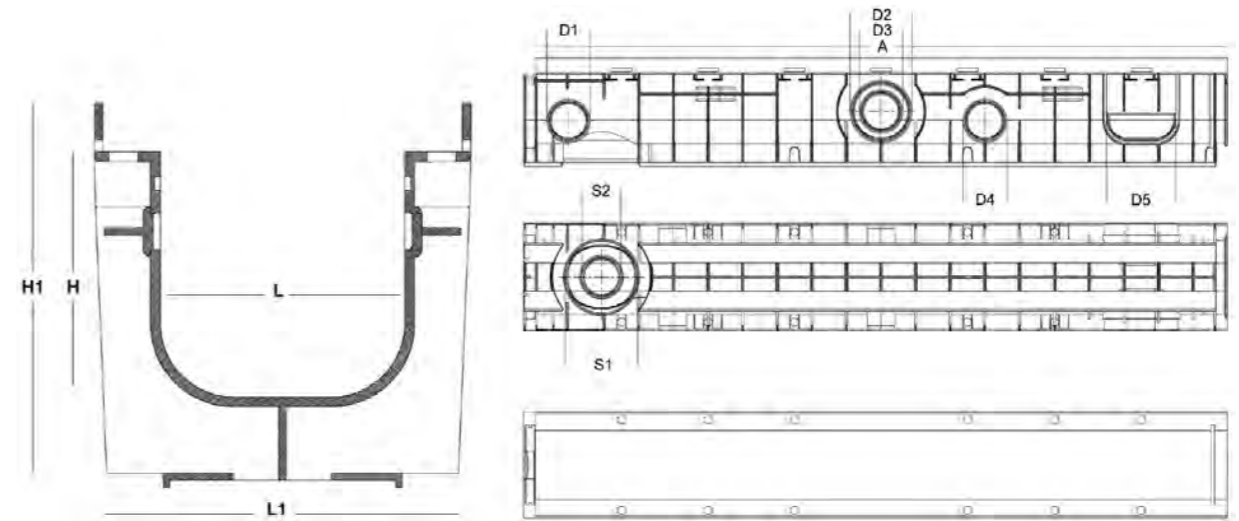


Polypropylene channel with Class B rated galvanised grates. Each galvanised gate comes with a 2 point security fixing, to keep it rattle free from vehicular movements and secure it from unauthorised access. Heel guard type grate, preventing heeled shoes & other objects from becoming caught in the grate. Ideal for driveway drainage, footpaths, schools, petrol stations, stables and more.

CODE	INTERNAL	EXTERNAL
DR60110050	100mm X 50mm	150mm X 100mm
DR601100100	100mm X 100mm	150mm X 150mm
DR601100150	100mm X 150mm	150mm X 200mm
DR601150100	150mm X 100mm	200mm X 150mm
DR601150150	150mm X 150mm	200mm X 200mm
DR601200100	200mm X 100mm	250mm X 150mm
DR601200150	200mm X 150mm	250mm X 200mm
DR601200200	200mm X 200mm	250mm X 250mm
DR601200250	200mm X 250mm	250mm X 300mm
DR601200300	200mm X 300mm	300mm X 350mm

# 601

## Galvanised Heel Guard Series



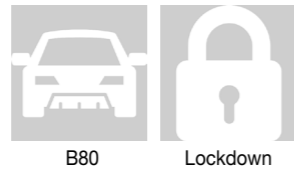
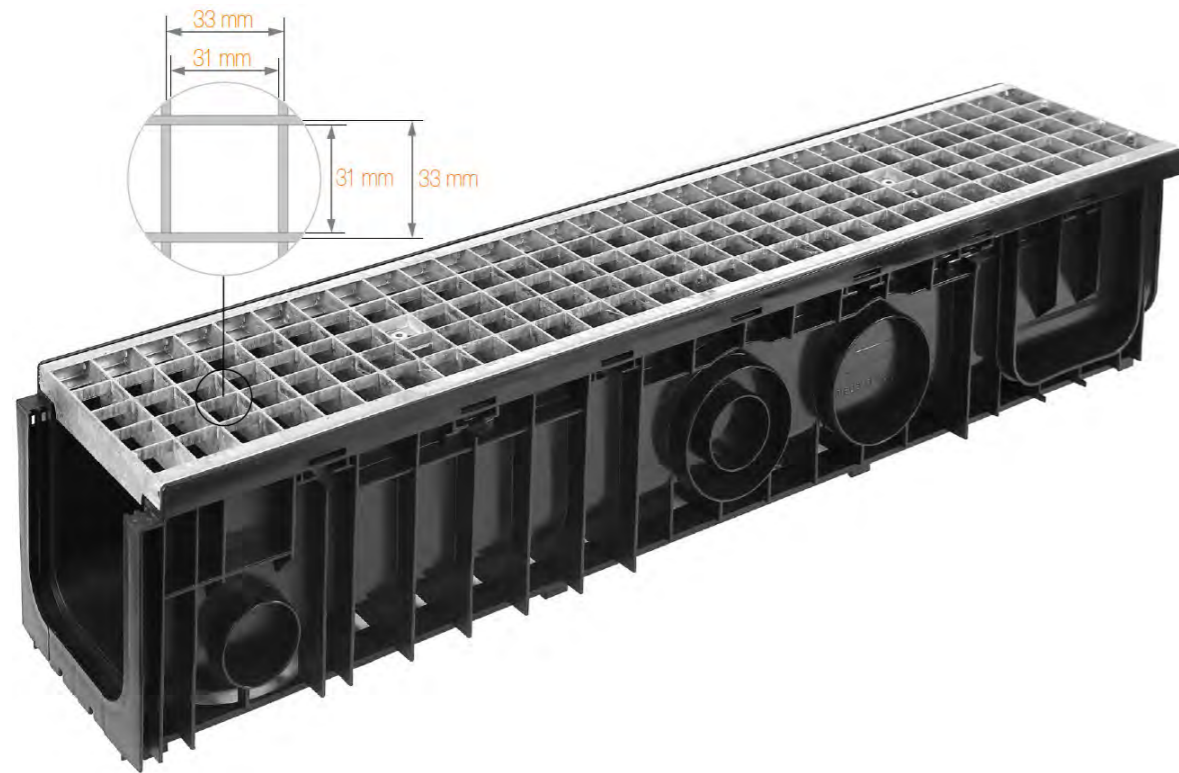
SABDRAIN 601													
CODE	L	H	L1	H1	D1	D2	D3	D4	D5	S1	S2	A	KG
DR60110050	100	50	150	100	40	-	-	40	100	110	63	1000	5.6
DR601100100	100	100	150	150	63	90	63	63	100	110	63	1000	6.4
DR601100150	100	150	150	200	63	110	63	110	100	110	63	1000	6.9
DR601150100	150	100	200	150	63	90	63	63	150	110	63	1000	8.3
DR601150150	150	150	200	200	63	110	63	110	150	110	63	1000	9.0
DR601200100	200	100	250	150	63	90	63	63	200	160	110	1000	12.1
DR601200150	200	150	250	200	63	110	63	90	200	160	110	1000	12.6
DR601200200	200	200	250	250	63	160	110	90	200	160	110	1000	13.1
DR601200250	200	250	250	300	63	160	110	90	200	160	110	1000	13.6
DR601200300	200	300	250	350	63	160	110	90	200	160	110	1000	14.1



SABDRAIN 601 - GRATE										
CODE	MATERIAL	DRAIN CM <sup>2</sup>	A	H	H1	L	F	LOAD CLASS	KG	
DR601GRATE100	galvanised steel	800	145	20	25	1000	31 x 8	B125	3.8	
DR601GRATE150	galvanised steel	1241	195	20	30	1000	31 x 8	B125	5.4	
DR601GRATE200	galvanised steel	1485	245	20	30	1000	31 x 8	B125	8.6	

# 602

## Galvanised Series

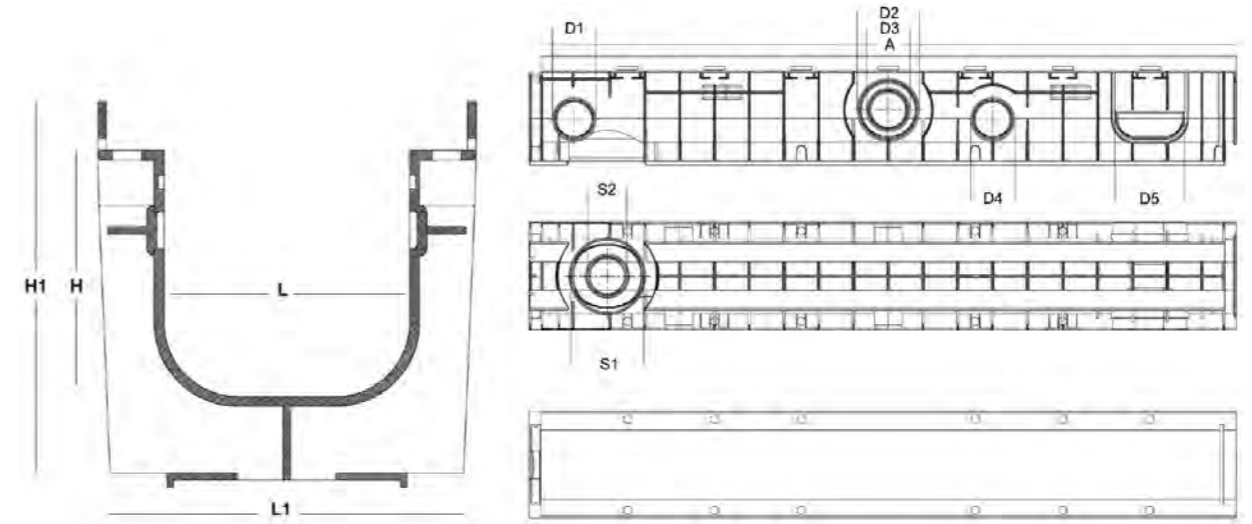


Polypropylene channel with Class B rated galvanised grates. Each galvanised gate comes with a 2 point security fixing, to keep it rattle free from vehicular movements and secure it from unauthorised access. Ideal for driveway drainage, petrol stations and more.

CODE	INTERNAL	EXTERNAL
DR60210050	100mm X 50mm	150mm X 100mm
DR602100100	100mm X 100mm	150mm X 150mm
DR602100150	100mm X 150mm	150mm X 200mm
DR602150100	150mm X 100mm	200mm X 150mm

# 602

## Galvanised Series



SABDRAIN 602													
CODE	L	H	L1	H1	D1	D2	D3	D4	D5	S1	S2	A	KG
DR60210050	100	50	150	100	40	-	-	40	100	110	63	1000	5.1
DR602100100	100	100	150	150	63	90	63	63	100	110	63	1000	5.8
DR602100150	100	150	150	200	63	110	63	110	100	110	63	1000	6.3
DR602150100	150	100	200	150	63	90	63	63	150	110	63	1000	6.9
DR602150150	150	150	200	200	63	110	63	110	150	110	63	1000	7.6



SABDRAIN 602 - GRATE										
CODE	MATERIAL	DRAIN CM <sup>2</sup>	A	H	H1	L	F	LOAD CLASS	KG	
DR601GRATE100	galvanised steel	1019	145	20	25	1000	31 x 31	B25	3.2	
DR601GRATE150	galvanised steel	1487	195	20	30	1000	31 x 31	B25	4.0	

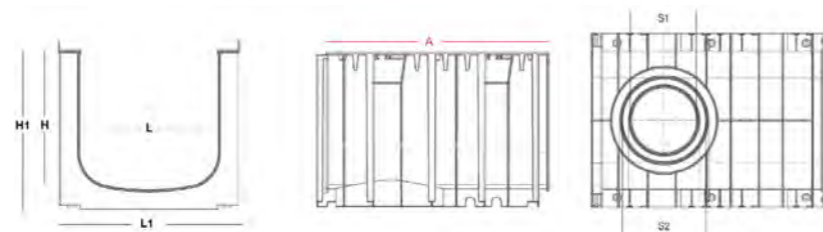
# 601

## Galvanised Heel Guard Grande Series



Polypropylene channel with Class B rated heel guard galvanised grates. Each galvanised grate comes with a 8 point security fixing, to keep it rattle free from vehicular movements & secure it from unauthorised access, as well as steel side edges to give greater resistance to heavy loads. Designed & recommended for malls & areas open to slow moving heavy commercial vehicles.

CODE	INTERNAL	EXTERNAL
DR601300200	300mm X 200mm	390mm X 270mm
DR601300300	300mm X 300mm	390mm X 370mm



SABDRAIN 601									
CODE	L	H	L1	H1	S2	S1	A	KG	
DR601300200	300	200	390	260	200	160	500 (sold in 1M lengths)	34.15	
DR601300300	300	300	390	360	63	100	500 (sold in 1M lengths)	35.6	



SABDRAIN 601 - GRATE									
CODE	MATERIAL	DRAIN CM <sup>2</sup>	A	H	H1	L	F	LOAD CLASS	KG
DR601GRATE300	galvanised steel	2304	376	20	30	1000	30 X 8	C150	13

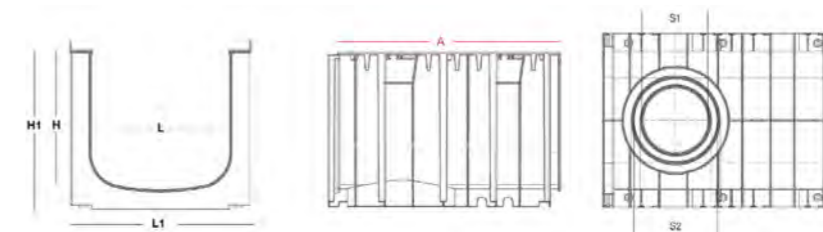
# 603

## Galvanised Heel Guard Grande Series

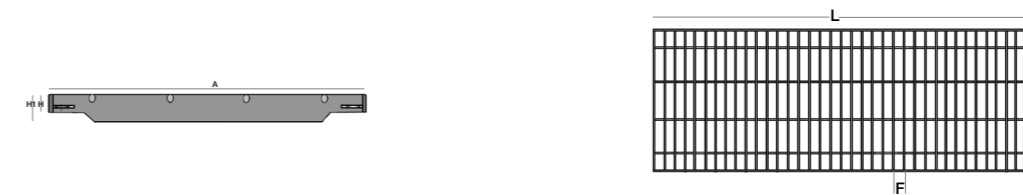


Polypropylene channel with Class C rated galvanised grates. Each galvanised grate comes with a 8 point security fixing, to keep it rattle free from vehicular movements & secure it from unauthorised access, as well as steel side edges to give greater resistance to heavy loads. Designed & recommended for malls & areas open to slow moving heavy commercial vehicles.

CODE	INTERNAL	EXTERNAL
DR603300200	300mm X 200mm	390mm X 270mm
DR603300300	300mm X 300mm	390mm X 370mm



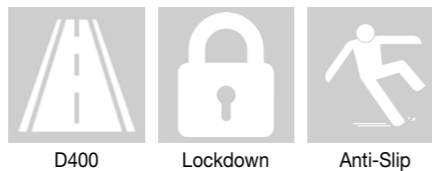
SABDRAIN 603											
CODE	L	H	L1	H1	S5	S4	S3	S2	S1	A	KG
DR603300200	300	200	390	260	-	-	-	200	160	500 (sold in 1M lengths)	34.15
DR603300300	300	300	390	360	-	-	-	63	100	500 (sold in 1M lengths)	35.6



SABDRAIN 603 - GRATE									
CODE	MATERIAL	DRAIN CM <sup>2</sup>	A	H	H1	L	F	LOAD CLASS	KG
DR603GRATE300	galvanised steel	2282	376	20	32	1000	88 X 23	C150	24.2

# 704

## Class D Cast Iron Series

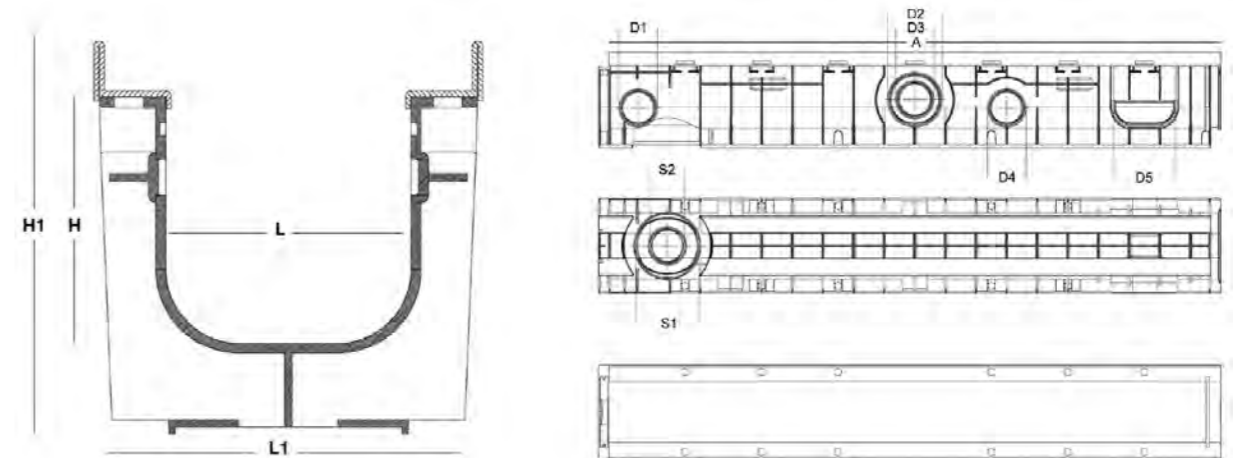


Polypropylene channel with Class D rated cast iron grates. Each grate is equipped with 8 point security fixing system to keep it rattle free from vehicular movements and secure it from unauthorised access. Designed for situations that need accessibility for heavy commercial vehicles (rigid or articulated trucks) as well as being able to meet the demands of highway use.

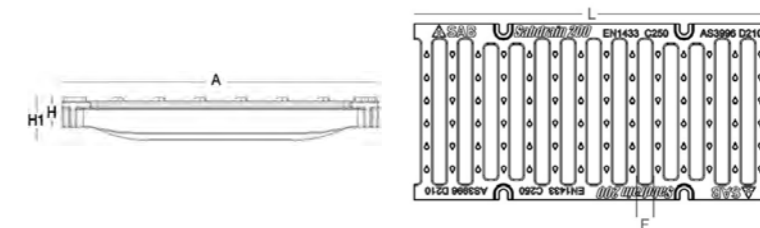
CODE	INTERNAL	EXTERNAL
DR70410050	100mm X 50mm	150mm X 100mm
DR704100100	100mm X 100mm	150mm X 150mm
DR704100150	100mm X 150mm	150mm X 200mm
DR704150100	150mm X 100mm	200mm X 150mm
DR704150150	150mm X 150mm	200mm X 200mm
DR70420050	200mm X 50mm	250mm X 100mm
DR704200100	200mm X 100mm	250mm X 150mm
DR704200150	200mm X 150mm	250mm X 200mm
DR704200200	200mm X 200mm	250mm X 250mm
DR704200250	200mm X 250mm	250mm X 300mm
DR704200300	200mm X 300mm	300mm X 350mm

# 704

## Class D Cast Iron Series



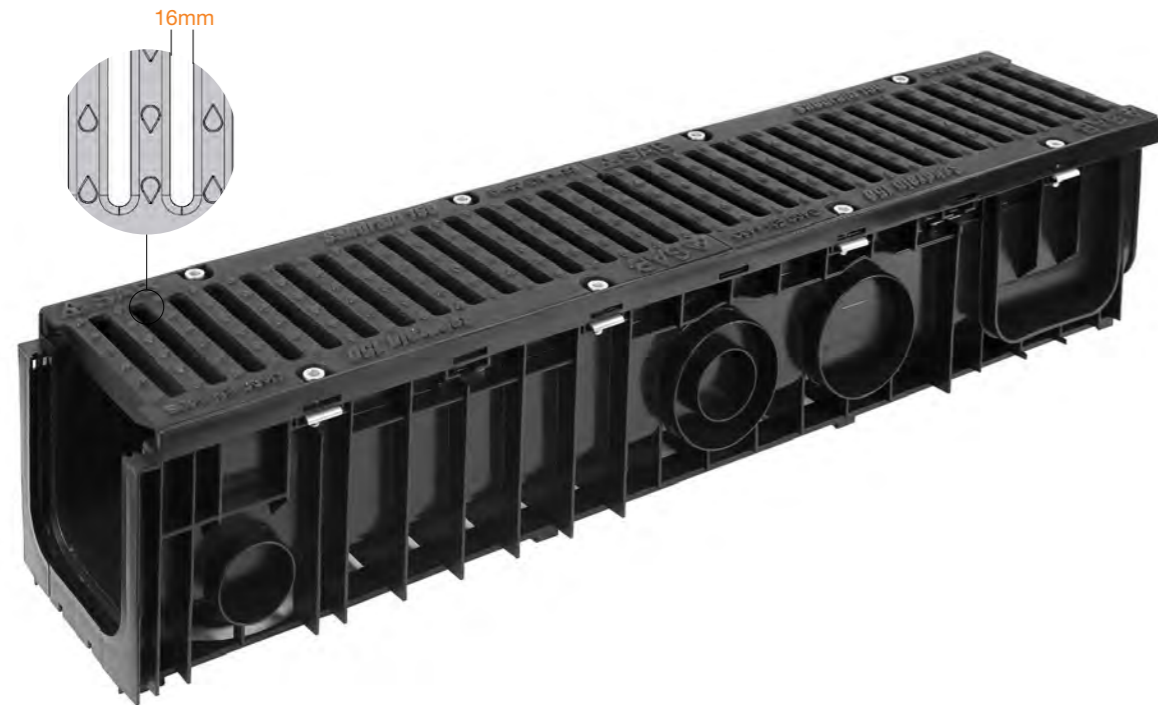
SABDRAIN 704													
CODE	L	H	L1	H1	D1	D2	D3	D4	D5	S1	S2	A	KG
DR70410050	100	50	150	100	40	-	-	40	100	110	63	1000	10.7
DR704100100	100	100	150	150	63	90	63	63	100	110	63	1000	11.3
DR704100150	100	150	150	200	63	110	63	110	100	110	63	1000	11.8
DR704150100	150	100	200	150	63	90	63	63	150	110	63	1000	14.5
DR704150150	150	150	200	200	63	110	63	110	150	110	63	1000	15.2
DR70420050	200	50	250	100	40	-	-	40	200	160	110	1000	16.9
DR704200100	200	100	250	150	63	90	63	63	200	160	110	1000	17.4
DR704200150	200	150	250	200	63	110	63	90	200	160	110	1000	17.9
DR704200200	200	200	250	250	63	160	110	90	200	160	110	1000	18.4
DR704200250	200	250	250	300	63	160	110	90	200	160	110	1000	18.9
DR704200300	200	300	250	350	63	160	110	90	200	160	110	1000	19.4



SABDRAIN 704 - GRATE										
CODE	MATERIAL	DRAIN CM <sup>2</sup>	A	H	H1	L	F	LOAD CLASS	KG	
DR704GRATE100	ductile iron	220	146	20	20	500	86 x 16	C250	4.3	
DR704GRATE150	ductile iron	348	197	20	20	500	136 x 16	C250	5.8	
DR704GRATE200	ductile iron	494	247	20	40	500	186 x 16	C250	7.0	

# 705

## Class E Cast Iron Series

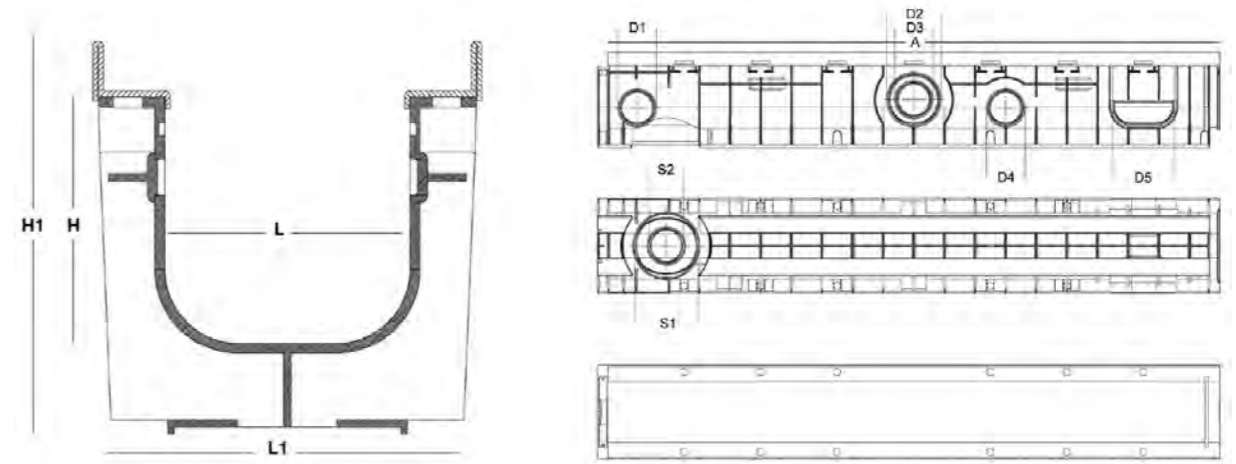


Polypropylene channel with Class E rated cast iron grates. Each grate is equipped with 8 point security fixing system to keep it rattle free from vehicular movements and secure it from unauthorised access. Designed for situations that require accessibility for heavy commercial & forklift vehicles (pneumatic/solid tyre) as well as being able to cater for the needs of highway use.

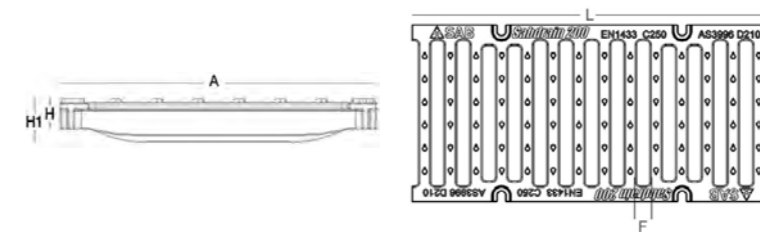
CODE	INTERNAL	EXTERNAL
DR70510050	100mm X 50mm	150mm X 100mm
DR705100100	100mm X 100mm	150mm X 150mm
DR705100150	100mm X 150mm	150mm X 200mm
DR705150100	150mm X 100mm	200mm X 150mm
DR705150150	150mm X 150mm	200mm X 200mm
DR70620050	200mm X 50mm	250mm X 100mm
DR705200100	200mm X 100mm	250mm X 150mm
DR705200150	200mm X 150mm	250mm X 200mm
DR705200200	200mm X 200mm	250mm X 250mm
DR705200250	200mm X 250mm	250mm X 300mm
DR705200300	200mm X 300mm	300mm X 350mm

# 705

## Class E Cast Iron Series



SABDRAIN 705													
CODE	L	H	L1	H1	D1	D2	D3	D4	D5	S1	S2	A	KG
DR70510050	100	50	150	100	40	-	-	40	100	110	63	1000	10.7
DR705100100	100	100	150	150	63	90	63	63	100	110	63	1000	11.3
DR705100150	100	150	150	200	63	110	63	110	100	110	63	1000	11.8
DR705150100	150	100	200	150	63	90	63	63	150	110	63	1000	14.5
DR705150150	150	150	200	200	63	110	63	110	150	110	63	1000	15.2
DR70520050	200	50	250	100	40	-	-	40	200	160	110	100	16.9
DR705200100	200	100	250	150	63	90	63	63	200	160	110	1000	17.4
DR705200150	200	150	250	200	63	110	63	90	200	160	110	1000	17.9
DR705200200	200	200	250	250	63	160	110	90	200	160	110	1000	18.4
DR705200250	200	250	250	300	63	160	110	90	200	160	110	1000	18.9
DR705200300	200	300	250	350	63	160	110	90	200	160	110	1000	19.4



SABDRAIN 705 - GRATE										
CODE	MATERIAL	DRAIN CM <sup>2</sup>	A	H	H1	L	F	LOAD CLASS	KG	
DR705GRATE100	ductile iron	220	146	20	20	500	86 x 16	E400	4.3	
DR705GRATE150	ductile iron	348	197	20	20	500	136 x 16	E400	5.8	
DR705GRATE200	ductile iron	494	247	20	40	500	186 x 16	E400	7.0	

# 706

## Class G Cast Iron Series

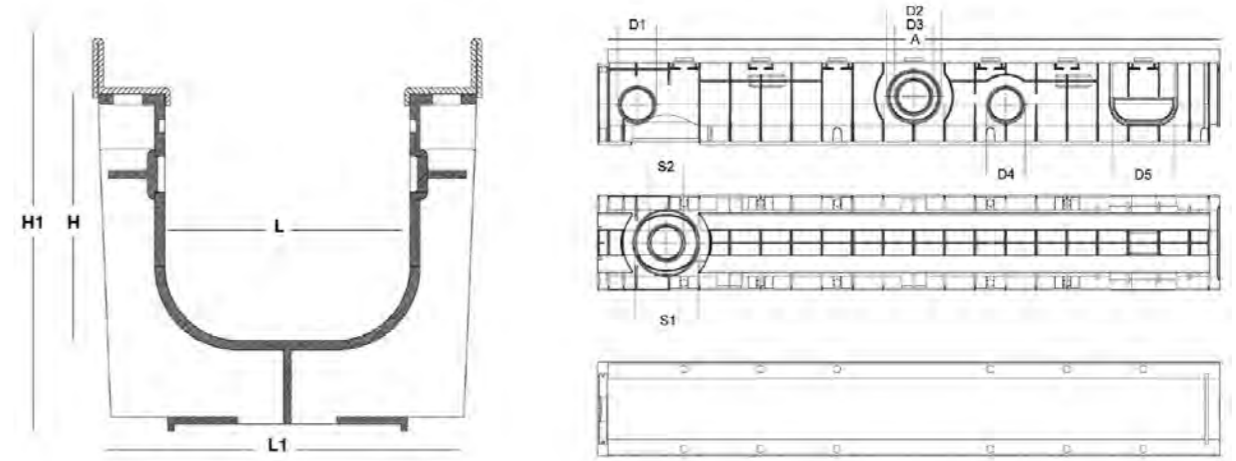


Polypropylene channel with Class G rated cast iron grates. Each high strength cast iron grate is equipped with 8 point security fixings system. Supplied with steel support edging to guarantee higher performance for heavy loads and high wheeled vehicles. Designed for aircraft traffic, loading docks, container terminals, military, mining and all hard wheeled vehicles.

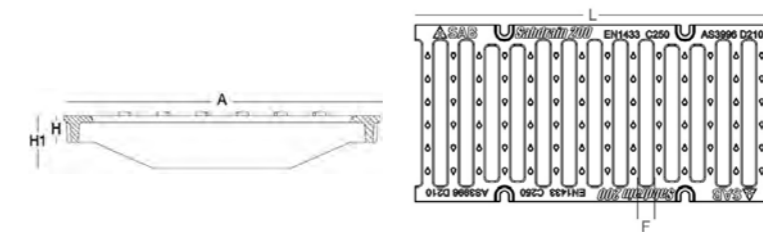
CODE	INTERNAL	EXTERNAL
DR70610050	100mm X 50mm	150mm X 100mm
DR706100100	100mm X 100mm	150mm X 150mm
DR706100150	100mm X 150mm	150mm X 200mm
DR706150100	150mm X 100mm	200mm X 150mm
DR706150150	150mm X 150mm	200mm X 200mm
DR70620050	200mm X 50mm	250mm X 100mm
DR706200100	200mm X 100mm	250mm X 150mm
DR706200150	200mm X 150mm	250mm X 200mm
DR706200200	200mm X 200mm	250mm X 250mm
DR706200250	200mm X 250mm	250mm X 300mm
DR706200300	200mm X 300mm	300mm X 350mm

# 706

## Class G Cast Iron Series



SABDRAIN 706													
CODE	L	H	L1	H1	D1	D2	D3	D4	D5	S1	S2	A	KG (total)
DR70610050	100	50	150	100	40	-	-	40	100	110	63	1000	15.6
DR706100100	100	100	150	150	63	90	63	63	100	110	63	1000	16.2
DR706100150	100	150	150	200	63	110	63	110	100	110	63	1000	16.7
DR706150100	150	100	200	150	63	90	63	63	150	110	63	1000	22.6
DR706150150	150	150	200	200	63	110	63	110	150	110	63	1000	23.3
DR70620050	200	50	250	100	40	-	-	40	200	160	110	1000	32.6
DR706200100	200	100	250	150	63	90	63	63	200	160	110	1000	33.1
DR706200150	200	150	250	200	63	110	63	90	200	160	110	1000	33.6
DR706200200	200	200	250	250	63	160	110	90	200	160	110	1000	34.1
DR706200250	200	250	250	300	63	160	110	90	200	160	110	1000	34.6
DR706200300	200	300	250	350	63	160	110	90	200	160	110	1000	35.1



SABDRAIN 706 - GRATE										
CODE	MATERIAL	DRAIN CM <sup>2</sup>	A	H	H1	L	F	LOAD CLASS	KG	
DR706GRATE100	ductile iron	220	147	20	27	500	86 x 16	F900	5.6	
DR706GRATE150	ductile iron	348	197	20	45	500	136 x 16	F900	8.7	
DR706GRATE200	ductile iron	494	247	20	50	500	186 x 16	F900	13.7	



# 707

## Cast Iron Heel Guard Series

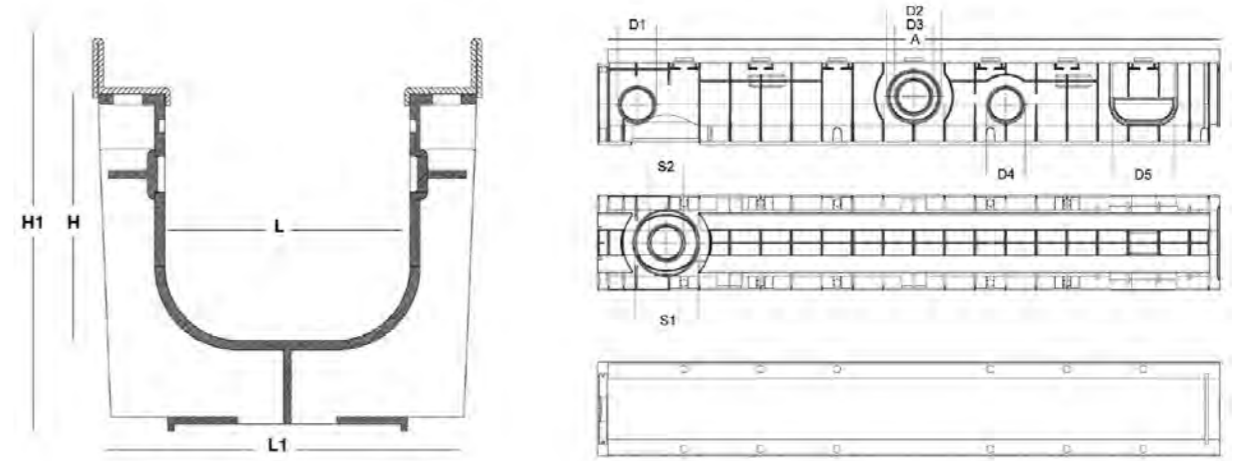


Polypropylene channel with Class D rated cast iron heel guard grates. Each high strength cast iron grate is equipped with 5 point security fixings system. Designed to withstand fast heavy moving vehicles used in commercial areas along with motorways/highways meeting the Class D requirements.

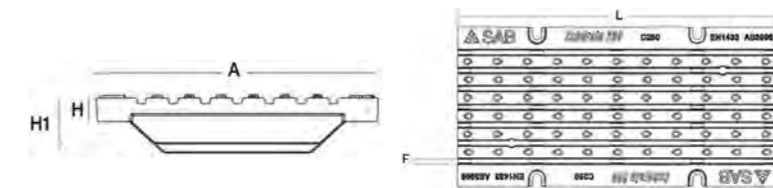
CODE	INTERNAL	EXTERNAL
DR70710050	100mm X 50mm	150mm X 100mm
DR707100100	100mm X 100mm	150mm X 150mm
DR707100150	100mm X 150mm	150mm X 200mm
DR707150100	150mm X 100mm	200mm X 150mm
DR707150150	150mm X 150mm	200mm X 200mm
DR70720050	200mm X 50mm	250mm X 100mm
DR707200100	200mm X 100mm	250mm X 150mm
DR707200150	200mm X 150mm	250mm X 200mm
DR707200200	200mm X 200mm	250mm X 250mm
DR707200250	200mm X 250mm	250mm X 300mm
DR707200300	200mm X 300mm	300mm X 350mm

# 707

## Cast Iron Heel Guard Series



SABDRAIN 707													
CODE	L	H	L1	H1	D1	D2	D3	D4	D5	S1	S2	A	KG (total)
DR70710050	100	50	150	100	40	-	-	40	100	110	63	1000	16.2
DR707100100	100	100	150	150	63	90	63	63	100	110	63	1000	16.8
DR707100150	100	150	150	200	63	110	63	110	100	110	63	1000	17.3
DR707150100	150	100	200	150	63	90	63	63	150	110	63	1000	21.8
DR707150150	150	150	200	200	63	110	63	110	150	110	63	1000	22.5
DR70720050	200	50	250	100	40	-	-	40	200	160	110	1000	26.6
DR707200100	200	100	250	150	63	90	63	63	200	160	110	1000	27.1
DR707200150	200	150	250	200	63	110	63	90	200	160	110	1000	27.6
DR707200200	200	200	250	250	63	160	110	90	200	160	110	1000	28.1
DR707200250	200	250	250	300	63	160	110	90	200	160	110	1000	28.6
DR707200300	200	300	250	350	63	160	110	90	200	160	110	1000	29.1





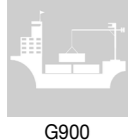
SABDRAIN 707 - GRATE										
CODE	MATERIAL	DRAIN CM <sup>2</sup>	A	H	H1	L	F	LOAD CLASS	KG	
DR707GRATE100	ductile iron	81	147	20	25	500	498 x 7	C250	5.9	
DR707GRATE150	ductile iron	137	197	20	31	500	498 x 7	C250	8.3	
DR707GRATE200	ductile iron	191	247	20	36	500	498 x 7	C250	10.7	

# Grande Series

## Cast Iron Series

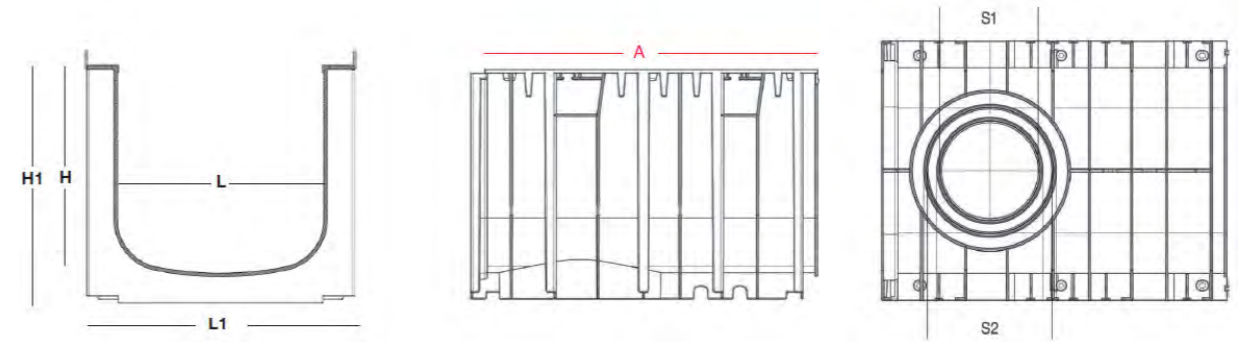


Polypropylene channels with Class D-G rated cast iron grates. Each high strength cast iron grate is equipped with 4 point security fixings system. Supplied with steel support edging to guarantee higher performance for heavy loads and high wheeled vehicles. Designed for a range of situations from highways to commercial areas to aircraft runways.

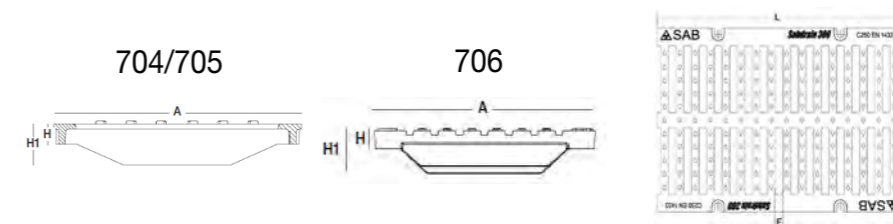
CODE	INTERNAL	EXTERNAL
 DR704300200	300mm X 200mm	390mm X 260mm
DR704300300	300mm X 300mm	390mm X 360mm
 DR705300200	300mm X 200mm	390mm X 260mm
DR705300300	300mm X 300mm	390mm X 360mm
DR705500500	500mm X 500mm	590mm X 560mm
 DR706300200	300mm X 200mm	390mm X 260mm
DR706300300	300mm X 300mm	390mm X 360mm
DR706500500	500mm X 500mm	590mm X 560mm

# Grande Series

## Cast Iron Series



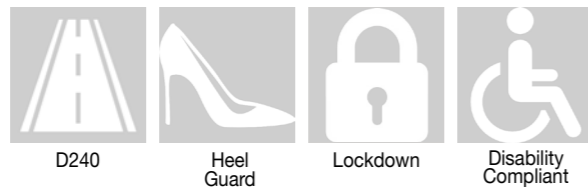
GRANDE SERIES											
CODE	L	H	L1	H1	S1	S2	S3	S4	S5	A	KG (total)
704 - CLASS C											
DR704300200	300	200	390	260	160	200	-	-	-	500	18.8
DR704300300	300	300	390	360	160	200	-	-	-	500	19.2
705 - CLASS E											
DR705300200	300	200	390	260	160	200	-	-	-	500	23.4
DR705300300	300	300	390	360	160	200	-	-	-	500	23.8
DR705500500	500	500	590	560	160	200	250	315	400	500	45
706 - CLASS G											
DR706300200	300	200	390	260	160	200	-	-	-	500	32.2
DR706300300	300	300	390	360	160	200	-	-	-	500	32.6
DR706500500	500	500	590	560	160	200	250	315	400	500	56.7



GRANDE SERIES - GRATES										
CODE	MATERIAL	DRAIN CM <sup>2</sup>	A	H	H1	L	F	LOAD CLASS	KG	
704 - CLASS C										
DR704GRATE300	ductile iron	756	376	20	40	500	150 X 18	C150	13.8	
705 - CLASS E										
DR705GRATE300	ductile iron	756	376	20	50	500	150 X 18	E400	18.4	
DR705GRATE500	ductile iron	1070	580	20	60	500	165 X 18	E400	34.8	
706 - CLASS G										
DR706GRATE300	ductile iron	618	376	20	60	500	138 X 16	G900	27.2	
DR706GRATE500	ductile iron	1070	580	20	70	500	165 X 16	G900	46.5	

# 707

## Cast Iron Heel Guard Grande Series

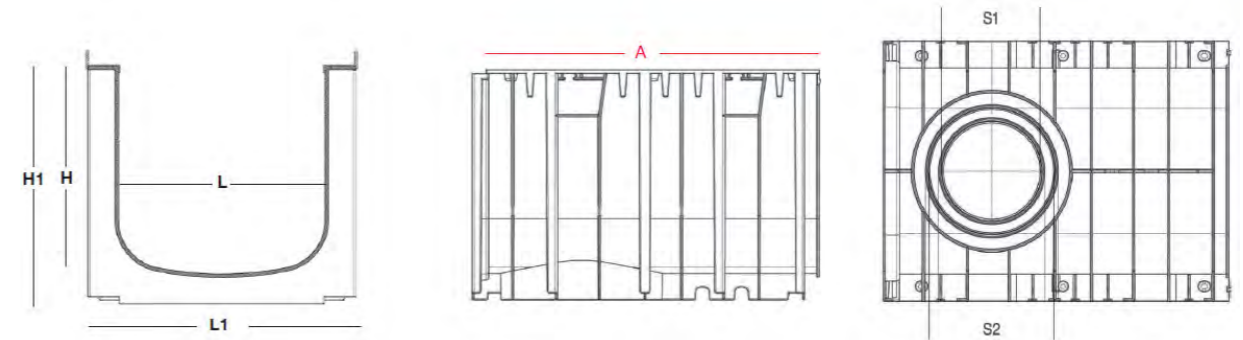


Polypropylene channel with Class D rated cast iron heel guard grates. Each grate is equipped with 4 point security fixings system to keep it rattle free from vehicular movements and secured from unauthorised access. Heel guard type grate, preventing heeled shoes & other objects from becoming caught in the grate. Design to withstand fast heavy moving vehicles used in commercial areas along with motorways/highways.

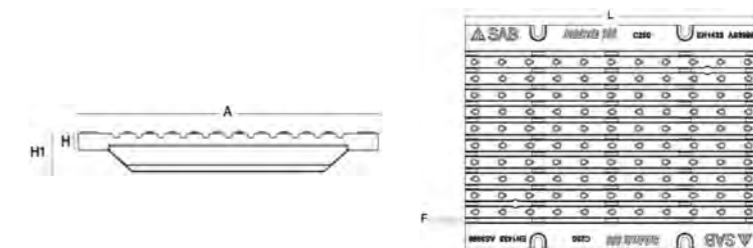
CODE	INTERNAL	EXTERNAL
DR707300200	300mm X 200mm	390mm X 260mm
DR707300300	300mm X 300mm	390mm X 360mm

# 707

## Cast Iron Heel Guard Grande Series



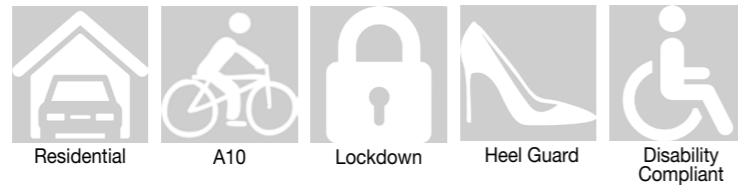
SABDRAIN 707											
CODE	L	H	L1	H1	S5	S4	S3	S2	S1	A	KG (total)
DR707300200	300	200	390	260	-	-	-	200	160	500	20.5
DR707300300	300	300	390	360	-	-	-	200	160	500	20.5



SABDRAIN 707 - GRATE										
CODE	MATERIAL	DRAIN CM <sup>2</sup>	A	H	H1	L	F	LOAD CLASS	KG	
DR707GRATE300	ductile iron	273	376	20	47	500	498 x 7	D240	15.5	

# 901

## Stainless Series - 304

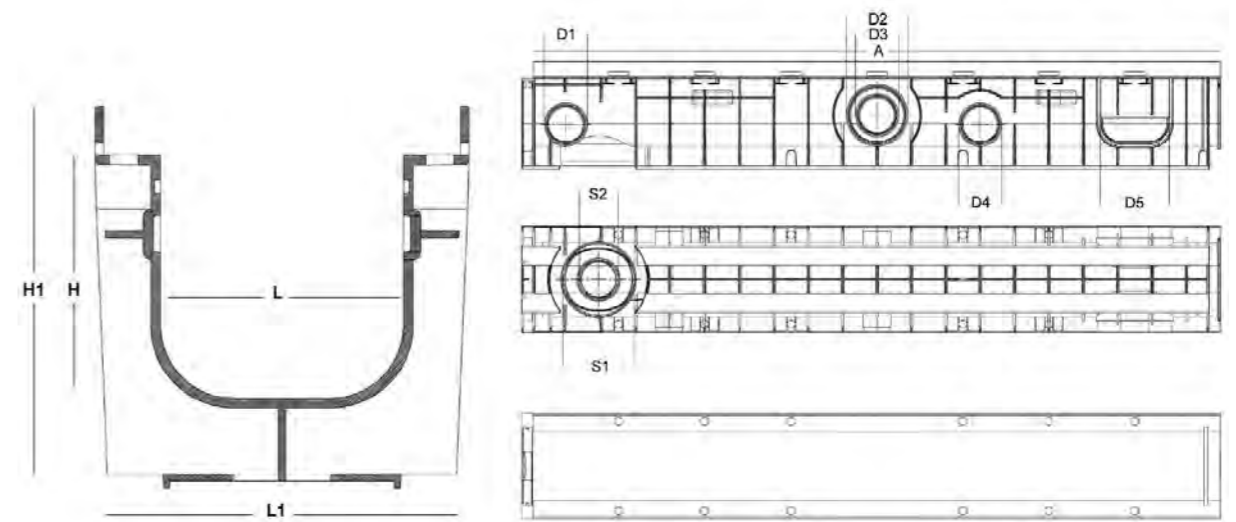


Polypropylene channel with Class A rated 304 stainless steel heel guard grates. Lockdown secures the grate from rattling & unauthorised access. Ideal for driveways, pools, pathways & more.

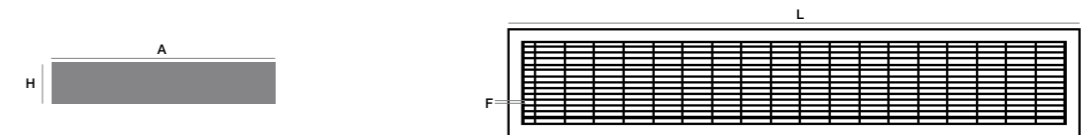
CODE	INTERNAL	EXTERNAL
DR90110050	100mm X 50mm	150mm X 100mm
DR901100100	100mm X 100mm	150mm X 150mm
DR901100150	100mm X 150mm	150mm X 200mm
DR901150100	150mm X 100mm	200mm X 150mm
DR901150150	150mm X 150mm	200mm X 200mm
DR90120050	200mm X 50mm	250mm X 100mm
DR901200100	200mm X 100mm	250mm X 150mm
DR901200150	200mm X 150mm	250mm X 200mm
DR901200200	200mm X 200mm	250mm X 250mm
DR901200250	200mm X 250mm	250mm X 300mm
DR901200300	200mm X 300mm	300mm X 350mm

# 901

## Stainless Series - 304



SABDRAIN 901													
CODE	L	H	L1	H1	D1	D2	D3	D4	D5	S1	S2	A	KG (total)
DR90110050	100	50	150	100	40	-	-	40	100	110	63	1000	7.2
DR901100100	100	100	150	150	63	90	63	63	100	110	63	1000	75
DR901100150	100	150	150	200	63	110	63	110	100	110	63	1000	7.9
DR901150100	150	100	200	150	63	90	63	63	150	110	63	1000	8.5
DR901150150	150	150	200	200	63	110	63	110	150	110	63	1000	9.8
DR90120050	200	50	250	100	40	-	-	40	200	160	110	1000	10.1
DR901200100	200	100	250	150	63	90	63	63	200	160	110	1000	10.6
DR901200150	200	150	250	200	63	110	63	90	200	160	110	1000	11.1
DR901200200	200	200	250	250	63	160	110	90	200	160	110	1000	11.6
DR901200250	200	250	250	300	63	160	110	90	200	160	110	1000	12.1
DR901200300	200	300	250	350	63	160	110	90	200	160	110	1000	12.6



SABDRAIN 901 - GRATE									
CODE	MATERIAL	DRAIN CM <sup>2</sup>	A	H	L	F	LOAD CLASS	KG	
DR901GRATE100	304 stainless steel	837	147	20	1000	23 X 5	A10	4.05	
DR901GRATE150	304 stainless steel	1139	197	20	1000	23 X 5	A10	5.85	
DR901GRATE200	304 stainless steel	1674	247	20	1000	23 X 5	A10	7.35	

Class B-G, 300mm wide & 316 stainless available against order

# 902

## Stainless Series - 304

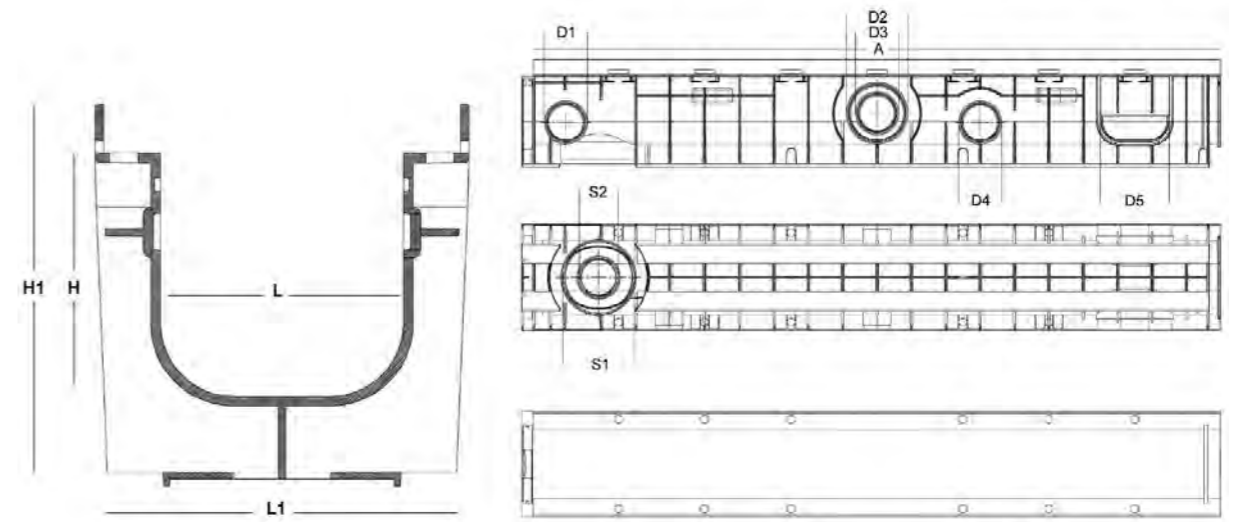


Polypropylene channel with Class A rated 304 stainless steel heel guard grates with antislip nodules. Lockdown secures the grate from rattling & unauthorised access. Ideal for driveways, pools, pathways & more.

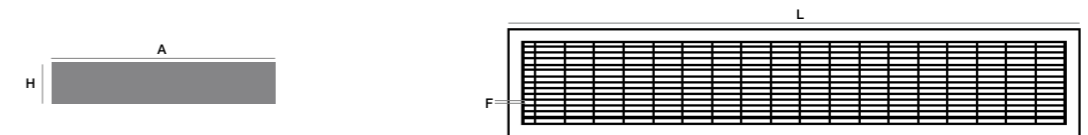
CODE	INTERNAL	EXTERNAL
DR90210050	100mm X 50mm	150mm X 100mm
DR902100100	100mm X 100mm	150mm X 150mm
DR902100150	100mm X 150mm	150mm X 200mm
DR902150100	150mm X 100mm	200mm X 150mm
DR902150150	150mm X 150mm	200mm X 200mm
DR90220050	200mm X 50mm	250mm X 100mm
DR902200100	200mm X 100mm	250mm X 150mm
DR902200150	200mm X 150mm	250mm X 200mm
DR902200200	200mm X 200mm	250mm X 250mm
DR902200250	200mm X 250mm	250mm X 300mm
DR902200300	200mm X 300mm	300mm X 350mm

# 902

## Stainless Series - 304



SABDRAIN 902													
CODE	L	H	L1	H1	D1	D2	D3	D4	D5	S1	S2	A	KG (total)
DR90210050	100	50	150	100	40	-	-	40	100	110	63	1000	7.2
DR902100100	100	100	150	150	63	90	63	63	100	110	63	1000	75
DR902100150	100	150	150	200	63	110	63	110	100	110	63	1000	7.9
DR902150100	150	100	200	150	63	90	63	63	150	110	63	1000	8.5
DR902150150	150	150	200	200	63	110	63	110	150	110	63	1000	9.8
DR90220050	200	50	250	100	40	-	-	40	200	160	110	1000	10.1
DR902200100	200	100	250	150	63	90	63	63	200	160	110	1000	10.6
DR902200150	200	150	250	200	63	110	63	90	200	160	110	1000	11.1
DR902200200	200	200	250	250	63	160	110	90	200	160	110	1000	11.6
DR902200250	200	250	250	300	63	160	110	90	200	160	110	1000	12.1
DR902200300	200	300	250	350	63	160	110	90	200	160	110	1000	12.6

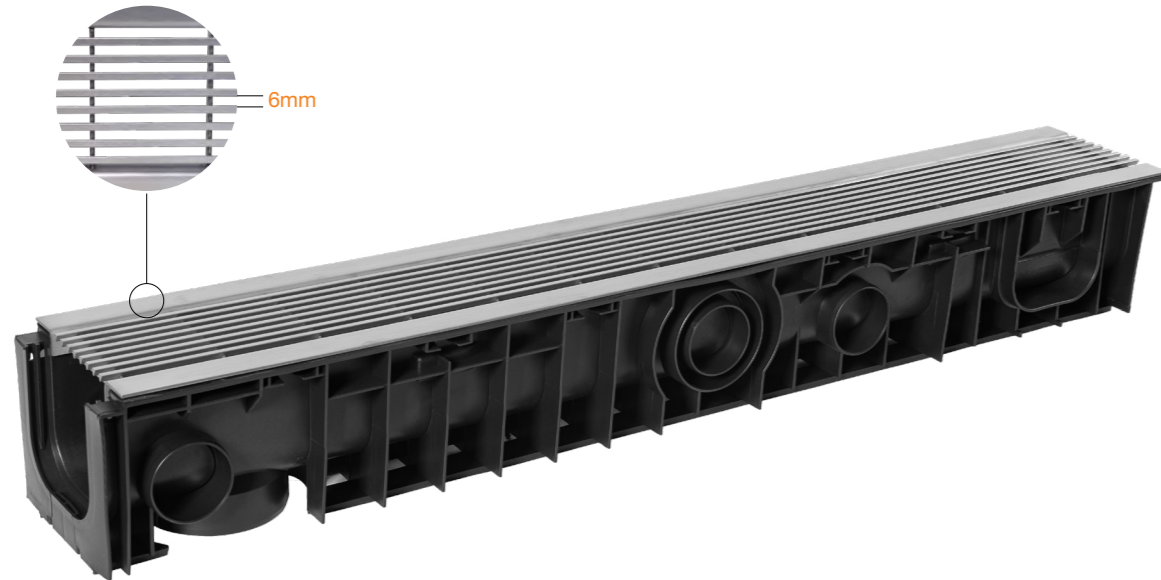


SABDRAIN 902 - GRATE									
CODE	MATERIAL	DRAIN CM <sup>2</sup>	A	H	L	F	LOAD CLASS	KG	
DR902GRATE100	304 stainless steel	837	147	20	1000	23 X 5	A10	4.05	
DR902GRATE150	304 stainless steel	1139	197	20	1000	23 X 5	A10	5.85	
DR902GRATE200	304 stainless steel	1674	247	20	1000	23 X 5	A10	7.35	

Class B-G, 300mm wide & 316 stainless available against order

# 951

## Marine Grade Stainless Series

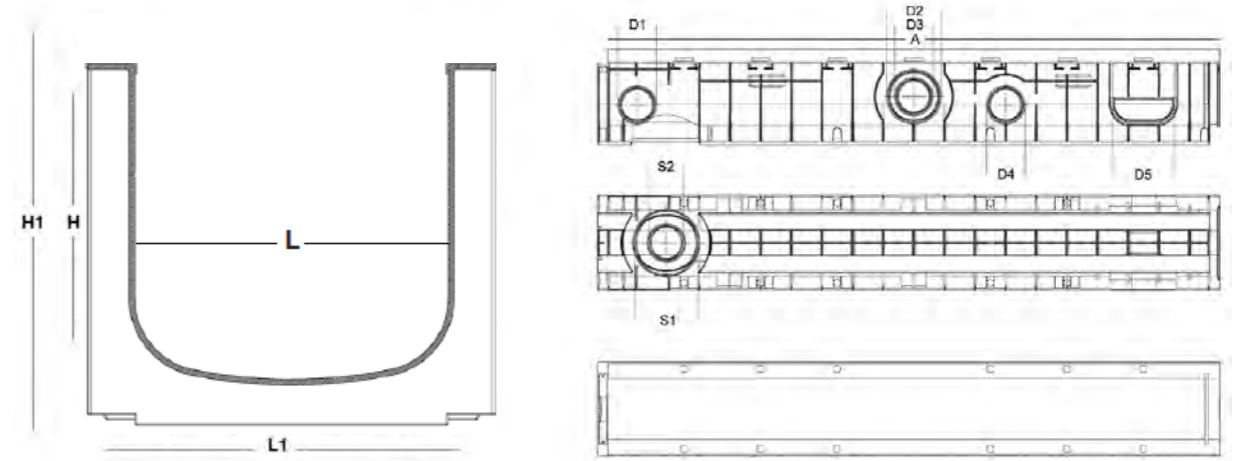


Polypropylene channel with Class A rated stainless steel heel guard grates. The 951 is made out of marine grade stainless steel, which is equivalent to 316. Sleek lines and slimline design gives it the versatility to be used in a variety of locations swimming pool surrounds, shopping centres, pedestrian walkways and more.

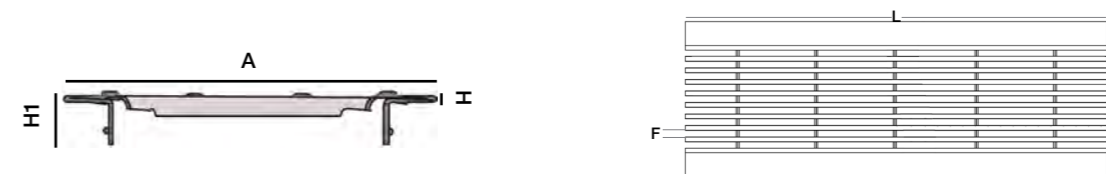
CODE	INTERNAL	EXTERNAL
DR95110050	100mm X 50mm	150mm X 100mm
DR951100100	100mm X 100mm	150mm X 150mm
DR951100150	100mm X 150mm	150mm X 200mm
DR951150100	150mm X 100mm	200mm X 150mm
DR951150150	150mm X 150mm	200mm X 200mm

# 951

## Marine Grade Stainless Series



SABDRAIN 951													
CODE	L	H	L1	H1	D1	D2	D3	D4	D5	S1	S2	A	KG (total)
DR95110050	100	50	150	80	43	-	-	40	100	110	63	1000	4.75
DR951100100	100	100	150	150	63	90	63	90	100	110	63	1000	5.4
DR951100150	100	150	150	190	63	90	63	90	100	110	63	1000	6.0
DR951150150	150	150	200	200	63	110	63	110	150	110	63	1000	7.0



SABDRAIN 951 - GRATE									
CODE	MATERIAL	DRAIN CM <sup>2</sup>	A	H	H1	L	F	LOAD CLASS	KG
DR951GRATE100	marine grade stainless steel	280	150	3	20	1000	72 x 6	A10	3.15
DR951GRATE150	marine grade stainless steel	420	200	3	20	1000	40 x 6	A10	4.5

# 952

## Marine Grade Stainless Series

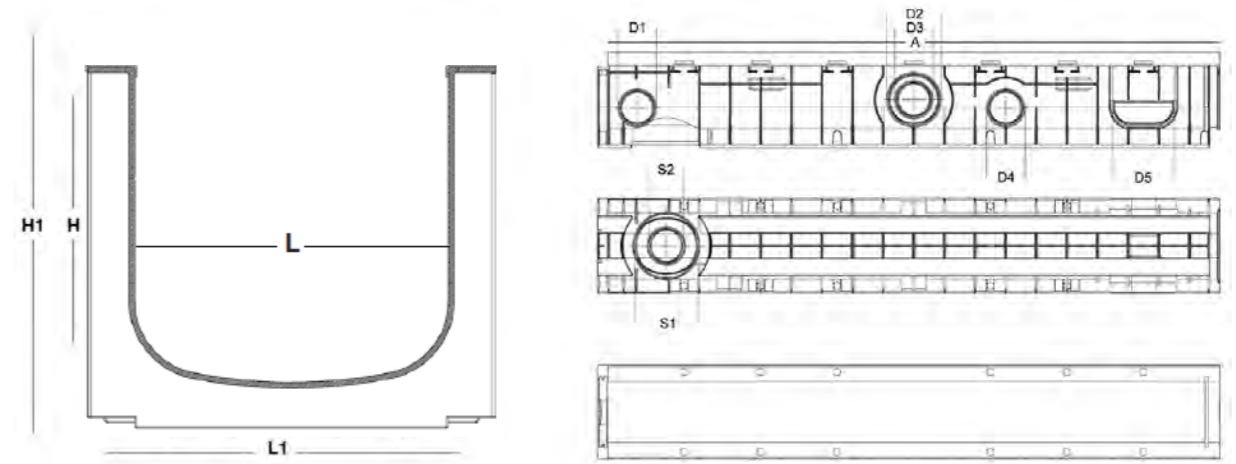


Polypropylene channel with Class A rated stainless steel anti-slip heel guard grates. The 952 is made out of marine grade stainless steel, which is equivalent to 316. Sleek lines and slimline design gives it the versatility to be used in a variety of locations swimming pool surrounds, shopping centres, pedestrian walkways and more.

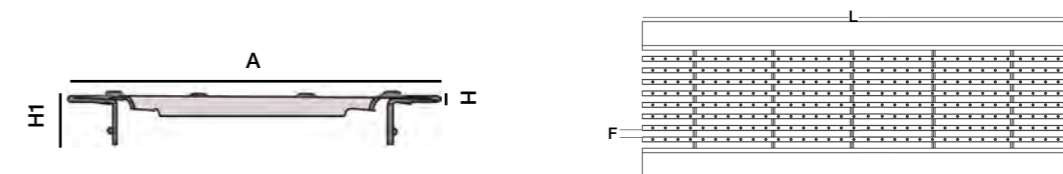
CODE	INTERNAL	EXTERNAL
DR95210050	100mm X 50mm	150mm X 100mm
DR952100100	100mm X 100mm	150mm X 150mm
DR952100150	100mm X 150mm	150mm X 200mm
DR952150100	150mm X 100mm	200mm X 150mm
DR952150150	150mm X 150mm	200mm X 200mm

# 952

## Marine Grade Stainless Series



SABDRAIN 952													
CODE	L	H	L1	H1	D1	D2	D3	D4	D5	S1	S2	A	KG (total)
DR95210050	100	50	150	80	43	-	-	40	100	110	63	1000	4.75
DR952100100	100	100	150	150	63	90	63	90	100	110	63	1000	5.4
DR952100150	100	150	150	190	63	90	63	90	100	110	63	1000	6.0
DR952150150	150	150	200	200	63	110	63	110	150	110	63	1000	7.0



SABDRAIN 952 - GRATE										
CODE	MATERIAL	DRAIN CM <sup>2</sup>	A	H	H1	L	F	LOAD CLASS	KG	
DR952GRATE100	marine grade stainless steel	280	150	3	20	1000	72 x 6	A10	3.15	
DR952GRATE150	marine grade stainless steel	420	200	3	20	1000	40 x 6	A10	4.5	

# 570

## Galvanised Slot Drain

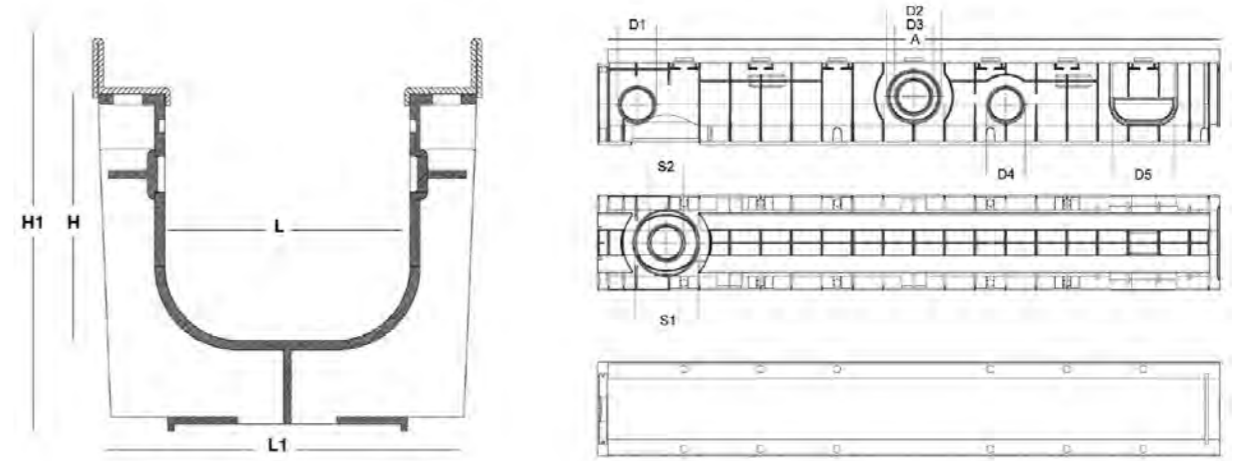


Polypropylene channel with Class D rated galvanised slot grates. Use as a discreet drainage solution, providing an aesthetic finish to the installation area. Drainage capacity of 56 cm<sup>2</sup> per linear meter.

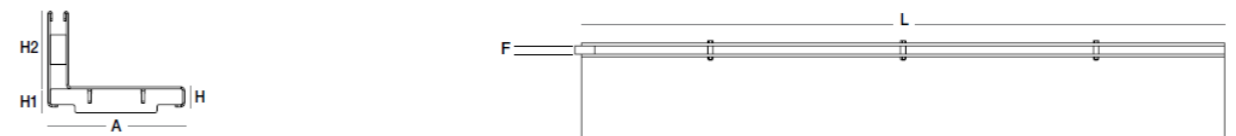
CODE	INTERNAL	EXTERNAL
DR57010050	100mm X 50mm	150mm X 100mm
DR570100100	100mm X 100mm	150mm X 150mm
DR570100150	100mm X 150mm	150mm X 200mm
DR570150100	150mm X 100mm	200mm X 150mm
DR570150150	150mm X 150mm	200mm X 200mm

# 570

## Galvanised Slot Drain



SABDRAIN 570													
CODE	L	H	L1	H1	D1	D2	D3	D4	D5	S1	S2	A	KG (total)
DR57010050	100	50	150	100	40	-	-	40	100	110	63	1000	9.3
DR570100100	100	100	150	150	63	90	63	63	100	110	63	1000	9.9
DR570100150	100	150	150	200	63	110	63	110	100	110	63	1000	10.4
DR570150100	150	100	200	150	63	90	63	63	150	110	63	1000	11.1
DR570150150	150	150	200	200	63	110	63	110	150	110	63	1000	1.8

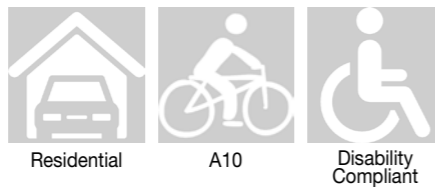
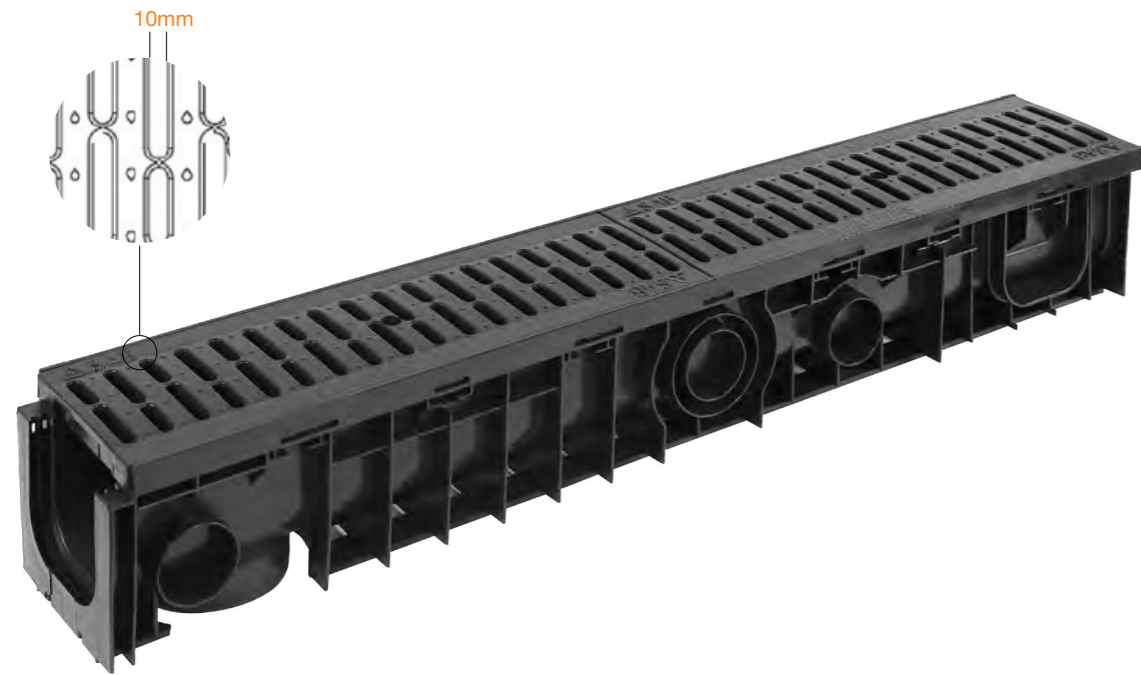


SABDRAIN 570 - GRATE											
CODE	MATERIAL	DRAIN CM <sup>2</sup>	A	H	H1	H2	L	F	LOAD CLASS	KG	
DR570GRID100	steel	130	145	20	25	100	1000	13	D240	7.5	
DR570GRID150	steel	130	195	20	30	100	1000	13	D240	8.5	



# 351

## Polypropylene Series

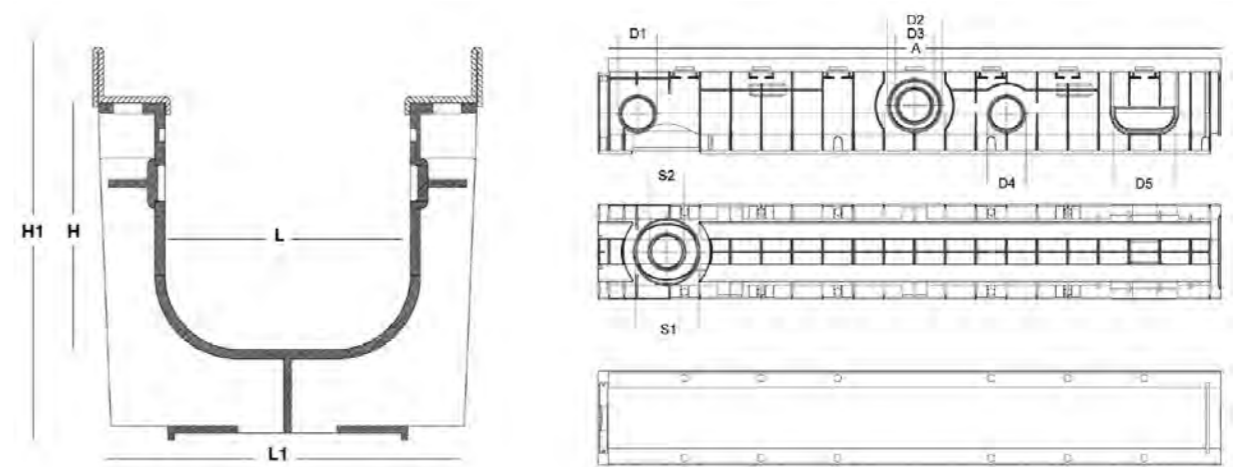


Polypropylene channel with Class A rated polypropylene grates. Click-clack fixing system for quick and easy access. Economical and versatile drainage system for use in residential situations such as driveways, pathways & gardens.

CODE	INTERNAL	EXTERNAL
DR35110050	100mm X 50mm	150mm X 100mm
DR351100100	100mm X 100mm	150mm X 150mm
DR351100150	100mm X 150mm	150mm X 200mm

# 351

## Polypropylene Series



SABDRAIN 351													
CODE	L	H	L1	H1	D1	D2	D3	D4	D5	S1	S2	A	KG
DR35110050	100	50	150	100	40	-	-	40	100	110	63	1000	3.0
DR351100100	100	100	150	150	63	90	63	63	100	110	63	1000	3.5
DR351100150	100	150	150	200	63	110	63	110	100	110	63	1000	4.0



SABDRAIN 351 - GRATE									
CODE	MATERIAL	DRAIN CM <sup>2</sup>	A	H	H1	L	F	LOAD CLASS	KG
DR351GRATE100	polypropylene	171	145	20	28	500	10 X 95	A10	0.6

# 355

## Polypropylene Series

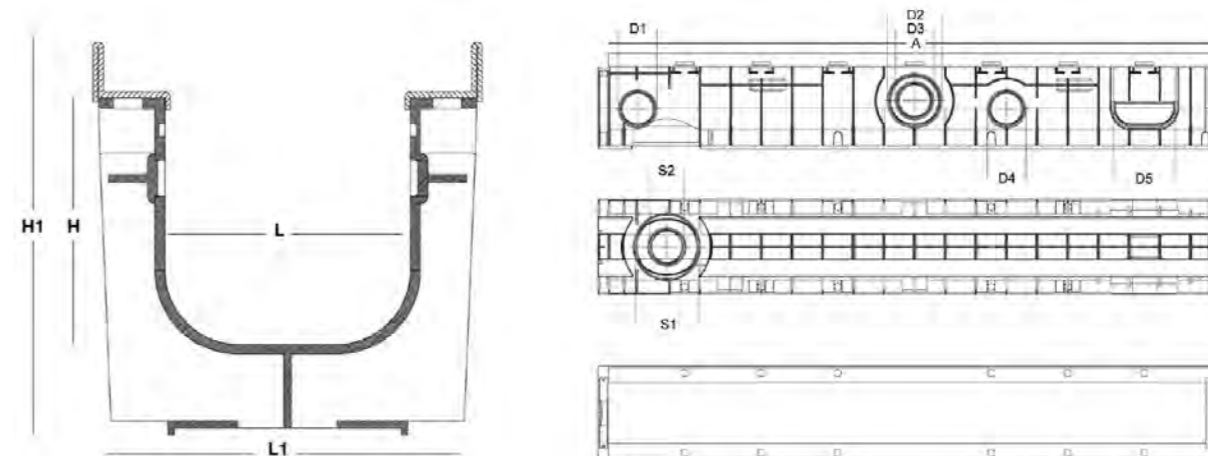


Polypropylene channel with Class B rated polypropylene grates. Click-clack fixing system for quick and easy access. Economical and versatile drainage system for use in residential situations such as driveways, pathways & gardens.

CODE	INTERNAL	EXTERNAL
DR35510050	100mm X 50mm	150mm X 100mm
DR355100100	100mm X 100mm	150mm X 150mm
DR355100150	100mm X 150mm	150mm X 200mm
DR355150100	150mm X 100mm	200mm X 150mm
DR355150150	150mm X 150mm	200mm X 200mm

# 355

## Polypropylene Series



SABDRAIN 355													
CODE	L	H	L1	H1	D1	D2	D3	D4	D5	S1	S2	A	KG
DR35510050	100	50	150	100	40	-	-	40	100	110	63	1000	4.1
DR355100100	100	100	150	150	63	90	63	63	100	110	63	1000	4.7
DR355100150	100	150	150	200	63	110	63	110	100	110	63	1000	5.2
DR355150100	150	100	200	150	63	90	63	63	150	110	63	1000	5.6
DR355150150	150	150	200	200	63	110	63	110	150	110	63	1000	6.3



SABDRAIN 355 - GRATE									
CODE	MATERIAL	DRAIN CM <sup>2</sup>	A	H	H1	L	F	LOAD CLASS	KG
DR355GRATE100	polypropylene	144	145	20	28	500	41 X 8	B80	1.15
DR355GRATE150	polypropylene	254	196	20	38	500	69 X 8	B80	1.5

# 356

## Polypropylene Series

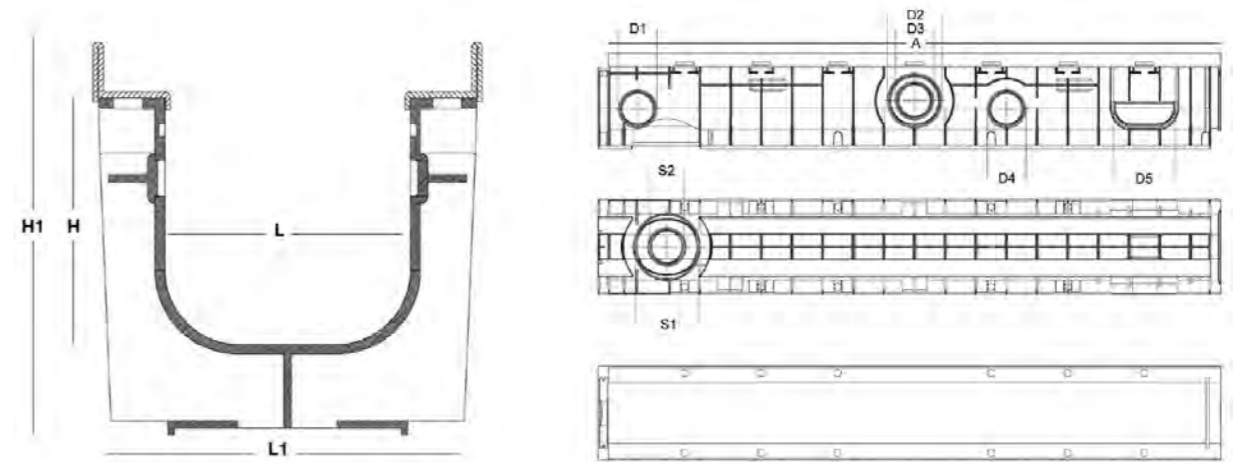


Polypropylene channel with Class C rated polypropylene grates. Click-clack fixing system for quick and easy access. Economical and versatile drainage system for use in residential situations such as driveways, pathways & gardens.

CODE	INTERNAL	EXTERNAL
DR35610050	100mm X 50mm	150mm X 100mm
DR356100100	100mm X 100mm	150mm X 150mm
DR356100150	100mm X 150mm	150mm X 200mm

# 356

## Polypropylene Series



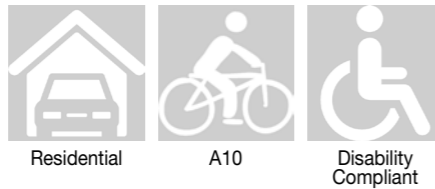
SABDRAIN 356													
CODE	L	H	L1	H1	D1	D2	D3	D4	D5	S1	S2	A	KG
DR35610050	100	50	150	100	40	-	-	40	100	110	63	1000	4.1
DR356100100	100	100	150	150	63	90	63	63	100	110	63	1000	4.7
DR356100150	100	150	150	200	63	110	63	110	100	110	63	1000	5.2



SABDRAIN 356 - GRATE									
CODE	MATERIAL	DRAIN CM <sup>2</sup>	A	H	H1	L	F	LOAD CLASS	KG
DR356GRATE100	polypropylene	144	146	20	28	500	41 X 8	C150	1.20

# 501

## Pressed Metal Series

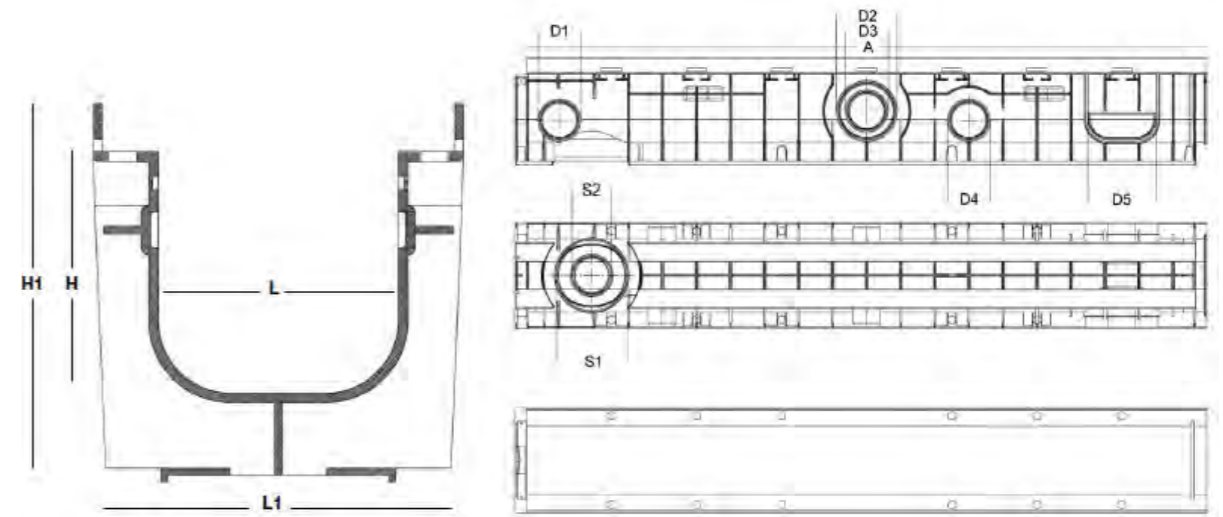


Polypropylene channel with Class A rated pressed metal grates. Utilizing a click clack fixing system for easy install and access. Lightweight drainage system designed for use in pedestrian areas such as plazas, walkways, malls & residential areas.

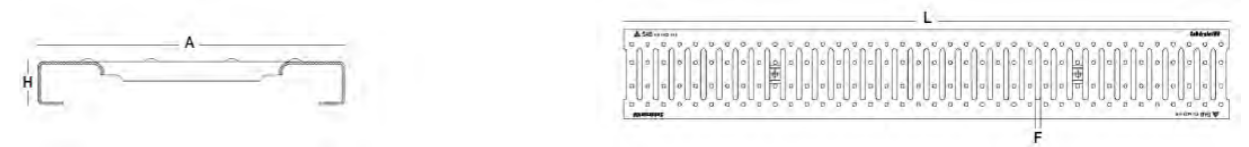
CODE	INTERNAL	EXTERNAL
DR50110050	100mm X 50mm	150mm X 100mm
DR501100100	100mm X 100mm	150mm X 150mm
DR501100150	100mm X 150mm	150mm X 200mm
DR501150100	150mm X 100mm	200mm X 150mm
DR501150150	150mm X 150mm	200mm X 200mm

# 501

## Pressed Metal Series



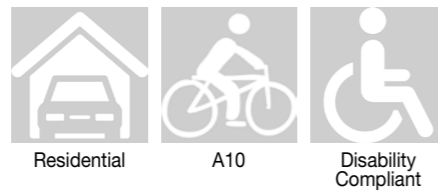
SABDRAIN 501													
CODE	L	H	L1	H1	D1	D2	D3	D4	D5	S1	S2	A	KG
DR50110050	100	50	150	100	40	-	-	40	100	110	63	1000	3.4
DR501100100	100	100	150	150	63	90	63	63	100	110	63	1000	4.1
DR501100150	100	150	150	200	63	110	63	110	100	110	63	1000	4.5
DR501150100	150	100	200	150	63	90	63	63	150	110	63	1000	5.5
DR501150150	150	150	200	200	63	110	63	110	150	110	63	1000	6.2



SABDRAIN 501 - GRATE									
CODE	MATERIAL	DRAIN CM <sup>2</sup>	A	H	H1	L	F	LOAD CLASS	KG
DR501GRATE100	pressed metal	260	146	20	-	1000	8 X 83	A15	1.5
DR501GRATE150	pressed metal	400	195	20	-	1000	8 X 130	A15	2.6

# 508

## Pressed Metal Series



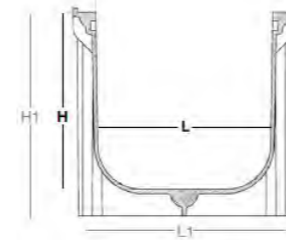
Polypropylene channel with Class A rated pressed metal grates. Utilizing a click clack fixing system for easy install and access. Lightweight drainage system designed for use in pedestrian areas such as plazas, walkways, malls & residential areas.

CODE	INTERNAL	EXTERNAL
DR508100100	100mm X 100mm	150mm X 150mm
DR5081003000 (kit box with 3 channels & 2 end caps)	100mm X 100mm	150mm X 150mm

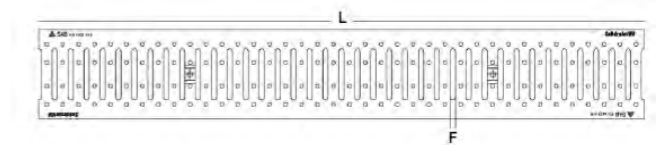
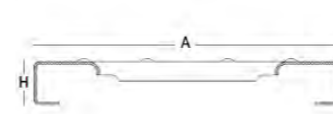


# 508

## Pressed Metal Series



SABDRAIN 508										
CODE	L	H	L1	H1	S1	S2	S3	S4	A	KG
DR501100100	100	100	125	117	90	75	100	80	1000	2.4



SABDRAIN 508 - GRATE									
CODE	MATERIAL	DRAIN CM <sup>2</sup>	A	H	H1	L	F	LOAD CLASS	KG
DR508GRATE100	pressed metal	260	118	1.8	17	1000	7.5 X 82	A15	1.2

# Slope Drain Accessory

channel & grate ordered separately



- |          |   |
|----------|---|
| <b>1</b> | High strength cast iron grates ranging from Class C-G |
| <b>2</b> | Slope Drain Accessory                                 |
| <b>3</b> | Locking system  |
| <b>4</b> | Click-clack channels                                  |
| <b>5</b> | Pipe connection                                       |



SABdrain slope drain utilises our polypropylene channels with an add on slope accessories designed to ensure strength, structural integrity and durability while incorporating excellent hydraulic characteristic. An economical alternative to traditional polymer drains and offers a faster, easier installation process. The perfect solution for driveways, parking areas, warehouses, loading docks, petrol station & other areas.



# Slope Drain Accessory

channel & grate ordered separately

Slope Accessory	Invert Depth (mm)		Overall Depth (mm)		Accessory Size (mm)	
<b>100mm Channel</b>						
A - 0-5mm	100	105	170	175	0	5
B - 5-10mm	105	110	175	180	5	10
C - 10-15mm	110	115	180	185	10	15
D - 15-20mm	115	120	185	190	15	20
E - 20-25mm	120	125	190	195	20	25
F - 25-30mm	125	130	195	200	25	30
G - 30-35mm	130	135	200	205	30	35
H - 35-40mm	135	140	205	210	35	40
I - 40-45mm	140	145	210	215	40	45
J - 45-50mm	145	150	215	220	45	50
<b>150mm Channel</b>						
A - 0-5mm	150	155	220	225	0	5
B - 5-10mm	155	160	225	230	5	10
C - 10-15mm	160	165	230	235	10	15
D - 15-20mm	165	170	235	240	15	20
E - 20-25mm	170	175	240	245	20	25
F - 25-30mm	175	180	245	250	25	30
G - 30-35mm	180	185	250	255	30	35
H - 35-40mm	185	190	255	260	35	40
I - 40-45mm	190	195	260	265	40	45
J - 45-50mm	195	200	265	270	45	50
<b>200mm Channel</b>						
A - 0-5mm	200	205	270	275	0	5
B - 5-10mm	205	210	275	280	5	10
C - 10-15mm	210	215	280	285	10	15
D - 15-20mm	215	220	285	290	15	20
E - 20-25mm	220	225	290	295	20	25
F - 25-30mm	225	230	295	300	25	30
G - 30-35mm	230	235	300	305	30	35
H - 35-40mm	235	240	305	310	35	40
I - 40-45mm	240	245	310	315	40	45
J - 45-50mm	245	250	315	320	45	50

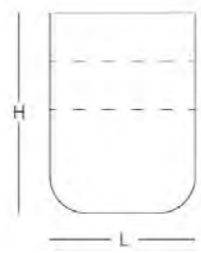
Slope Accessory	Invert Depth (mm)		Overall Depth (mm)		Accessory Size (mm)	
<b>250mm Channel</b>						
A - 0-5mm	250	255	320	325	0	5
B - 5-10mm	255	260	325	330	5	10
C - 10-15mm	260	265	330	335	10	15
D - 15-20mm	265	270	335	340	15	20
E - 20-25mm	270	275	340	345	20	25
F - 25-30mm	275	280	345	350	25	30
G - 30-35mm	280	285	350	355	30	35
H - 35-40mm	285	290	355	360	35	40
I - 40-45mm	290	295	360	365	40	45
J - 45-50mm	295	300	365	370	45	50
<b>300mm Channel</b>						
A - 0-5mm	300	305	370	375	0	5
B - 5-10mm	305	310	375	380	5	10
C - 10-15mm	310	315	380	385	10	15
D - 15-20mm	315	320	385	390	15	20
E - 20-25mm	320	325	390	395	20	25
F - 25-30mm	325	330	395	400	25	30
G - 30-35mm	330	335	400	405	30	35
H - 35-40mm	335	340	405	410	35	40
I - 40-45mm	340	345	410	415	40	45
J - 45-50mm	345	350	415	420	45	50

SABDRAIN SLOPE KIT ONLY		
CODE	NO. OF PIECES	DESCRIPTION
DRSLOPEKIT	20	2x each: A,B,C,D,E,F,G,H,I,J

# Accessories

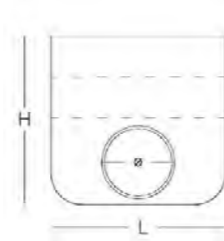
## End Caps

CODE	L x H
DREC10050	100mm X 50mm
DREC100100	100mm X 100mm
DREC100150	100mm X 150mm
DREC150100	150mm X 100mm
DREC150150	150mm X 150mm
DREC200100	200mm X 100mm
DREC200150	200mm X 150mm
DREC200200	200mm X 200mm
DREC200250	200mm X 250mm
DREC200300	200mm X 300mm
DREC300300	300mm X 300mm
DREC500500	500mm X 500mm



## End Caps With Outlet

CODE	L x H	Ø
DREC10090COMBO	100mm X 100mm	90
DREC150COMBO	150mm X 150mm	110



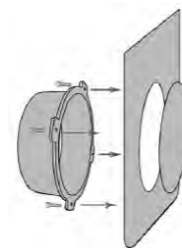
## Install Clip

CODE	DESCRIPTION
DRINSTALL	Install Clip

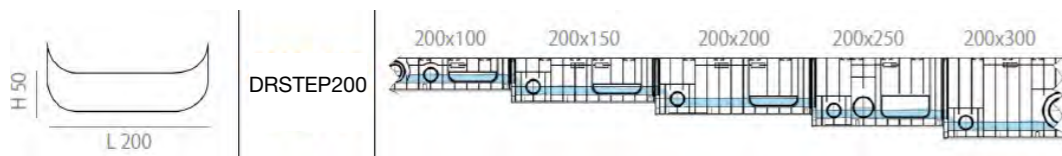


## Sprigot Offtake

CODE	Ø
DRSO90	90
DRSO100	100
DRSO150	150



## Stepped Fall Cap



# Load Class Guide

Class Rating	Nominal Wheel Loading (KG)	Serviceability Design Load (KN)		Ultimate Design Load		Recommended Uses
		AS3966	EN1443	AS3966	EN1443	
Residential Will withstand 1.5 tonne wheel	N/A	N/A	N/A	N/A	N/A	A non-rated drainage channel designed for use in residential applications such as footpaths and driveways. Will withstand 1.5 Tonne wheel loading
Class A Pedestrians, cyclists	330kg	6.7	10	10	15	Precincts (including footpaths) accessible only to pedestrians & cyclists, closed to any other traffic.
Class B Passenger, Light commercial vehicles	2,670kg	53	83	80	125	Areas (including driveways & footpaths) accessible to passenger & light commercial vehicles.
Class C Slow moving vehicles, heavy commercial vehicles	5,000kg	100	167	150	250	Shopping centres, driveways, parking zones and areas open to slow moving and heavy commercial vehicles.
Class D Highways & fast moving heavy vehicles	8,000kg	140	267	240	400	Highways & roads, warehouse and parking areas subject to fast moving heavy commercial vehicles.
Class E Heavy wheeled vehicles, mining & industrial	13,700kg	267	400	400	600	Commercial heavy wheeled traffic, hardwheeled forklifts, construction equipment, military and mining vehicles
Class F High wheeled vehicles, container terminals, docks	20,000kg	400	600	600	900	High speed vehicles, shipping docks and aircraft traffic subject to high wheel loads.
Class G Heavy loading areas, aircraft pavements, runways	30,000kg	600	600	900	900	Docks and aircraft pavements subject to very high wheel loads, extra heavy duty.

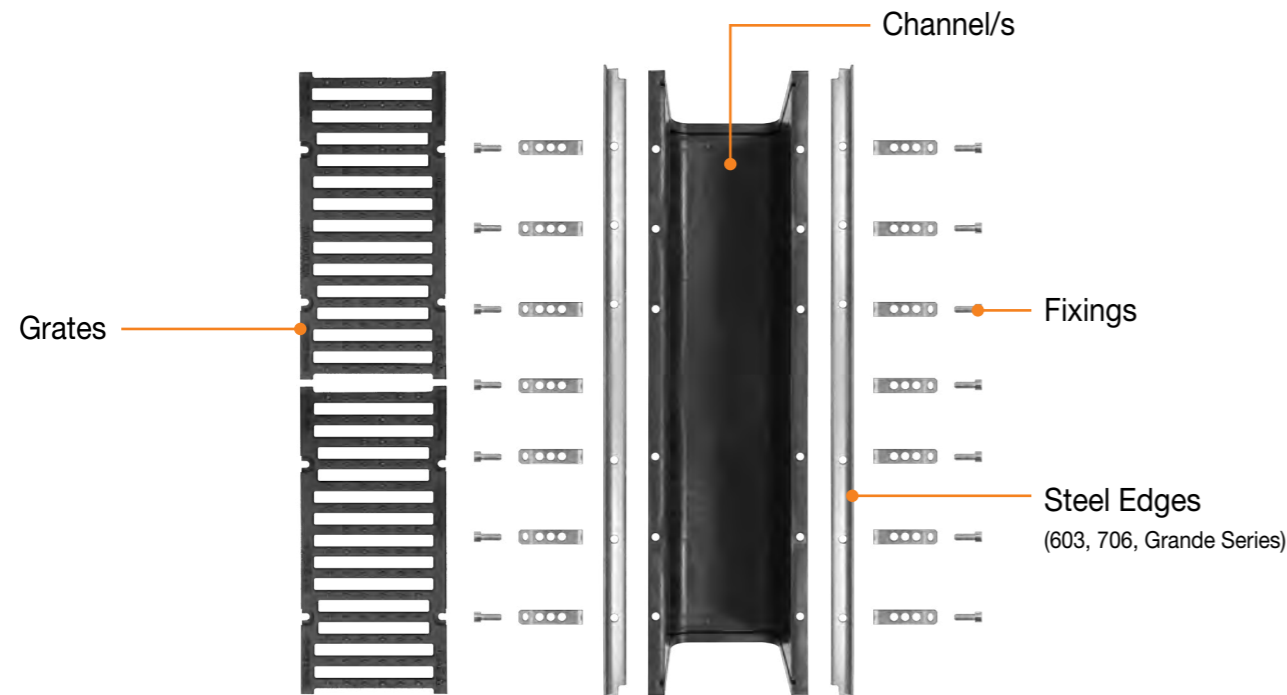


### Wheelchair & Walking Cane Compliance

AS 1428.2 Clause 9 Ground and floor surfaces, specifies grate requirements. 'If gratings are located in a walking surface, they shall have spaces no more than 13mm wide and no more than 150mm long. If gratings have elongated openings, they shall be placed so that the long dimension is transverse to the dominant direction of travel'

# Installation

## Components



## Assembly

A - Insert the steel edges on the channel & assemble the grates (1)

B - Screw and tighten the screws and anchors (2) widen the anchors to an inclination of 45° to the channel (3)

C - Assemble the channels together to the desired length. Every channel must be inserted completely until the lip snaps into place. (4)



A - Dig the trench proper size (1), the land should be well pressed

B - Lay a bed of concrete of the recommended thickness. (2)

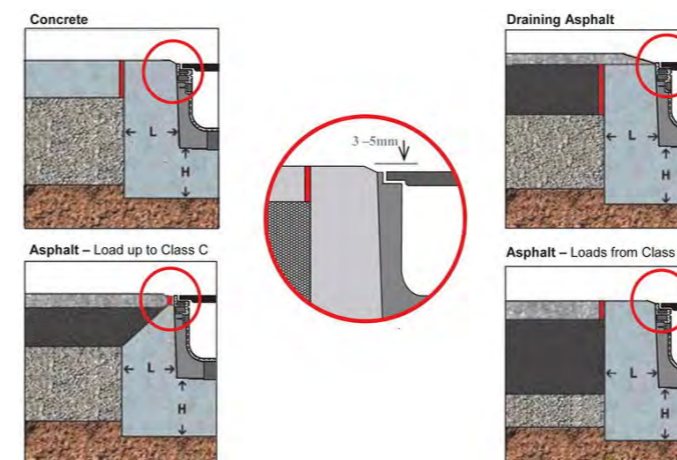
C - Lay the channel on the ground (3)

D - Apply a lateral backfill onto the channel with suitable concrete and thickness as recommended. (4) The concrete should be vibrated & rendered. It should fill all the interstices, in particular behind the support edgings of the grate. (5). For heavier load classes, we suggested reinforcing the concrete with steel rods for better load distribution.

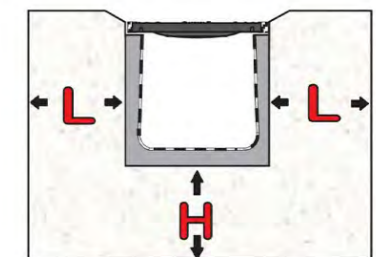
E - When the concrete is solidified it is possible to proceed with the flooring in asphalt, tiles or paving. During this step is it recommended to cover grates to prevent them getting dirty.



## Installation Examples



## Dimensions Of Concrete Supports



		DIMENSIONS			
Load Class		Class A	Class B	Class C	Class D
Concrete bed size	H	80mm	100mm	150mm	200mm
Concrete lateral backfill size	L	100mm	100mm	150mm	200mm





[www.sabdrain.com.au](http://www.sabdrain.com.au) | 1300 475 169 | [info@sabdrain.com.au](mailto:info@sabdrain.com.au)



2023