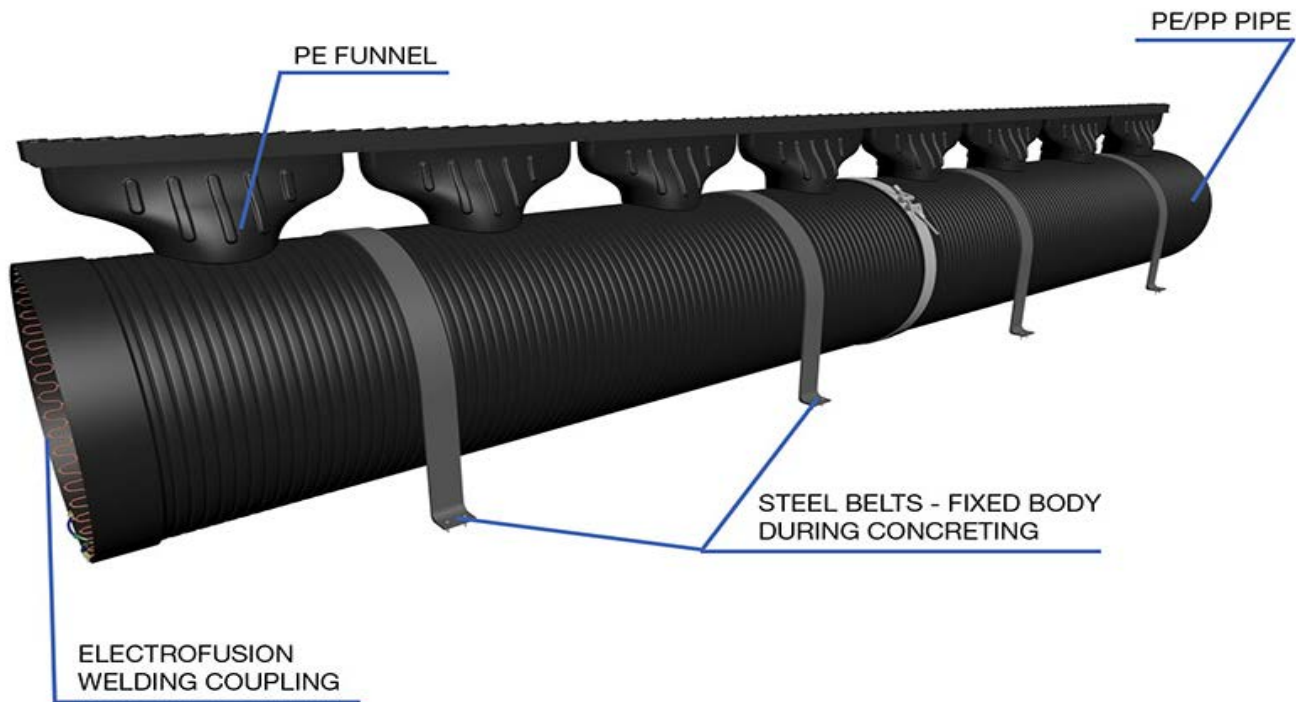
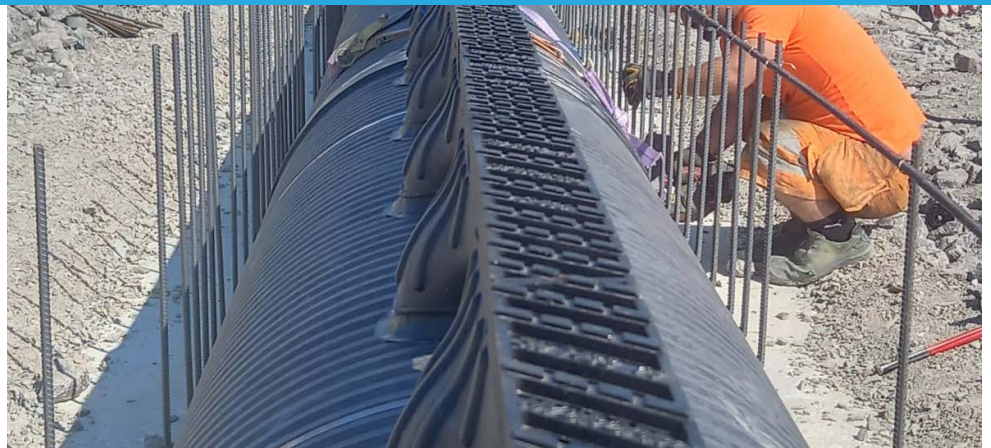


High Capacity Slot Drainage System



- For collecting & transporting stormwater
- Lengths up to 6M
- Fast & easy installation
- One concrete pour
- Saves money & time
- Watertight connections by electrical welding

Sizes available from 200mm-1200mm (internal diameter)



Airports | Container terminals | Industrial areas | Distribution centres | Highways & motorways

High Capacity Slot Drainage System



The system achieves high watertightness and bond strengths through the use of electric welding.

- One electrofusion welding machine can make two welds simultaneously
- 12M in 30 minutes

