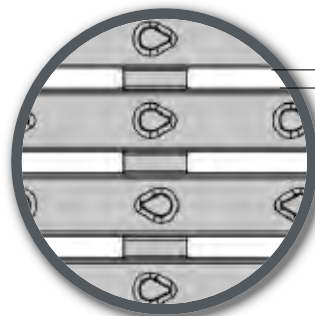


707 CAST IRON HEEL GUARD GRATED CHANNEL

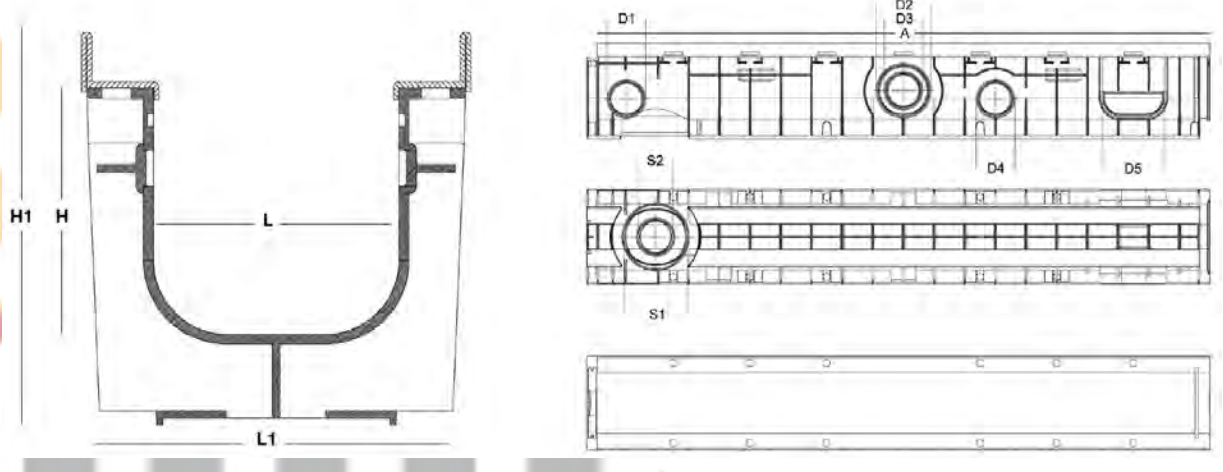


7 mm

The details that make the difference...

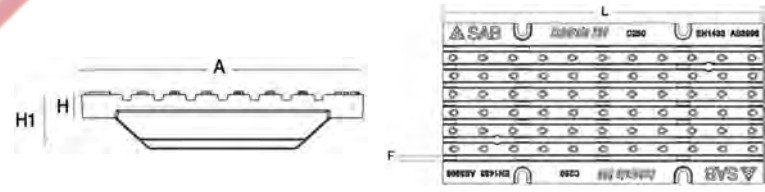
Class D Cast Iron Grate & Polypropylene Channel

Polypropylene channel with Class D rated cast iron heel guard grates. Each high strength cast iron grate is equipped with 5 point security fixings system. Designed to withstand fast heavy moving vehicles used in commercial areas along with motorways/highways meeting the Class D requirements.



SABDRAIN 707

CODE	L	H	L1	H1	D1	D2	D3	D4	D5	S1	S2	A	KG (total)
DR70710050	100	50	150	100	40	-	-	40	100	110	63	1000	16.2
DR707100100	100	100	150	150	63	90	63	63	100	110	63	1000	16.8
DR707100150	100	150	150	200	63	110	63	110	100	110	63	1000	17.3
DR707150100	150	100	200	150	63	90	63	63	150	110	63	1000	21.8
DR707150150	150	150	200	200	63	110	63	110	150	110	63	1000	22.5
DR70720050	200	50	250	100	40	-	-	40	200	160	110	1000	26.6
DR707200100	200	100	250	150	63	90	63	63	200	160	110	1000	27.1
DR707200150	200	150	250	200	63	110	63	90	200	160	110	1000	27.6
DR707200200	200	200	250	250	63	160	110	90	200	160	110	1000	28.1
DR707200250	200	250	250	300	63	160	110	90	200	160	110	1000	28.6
DR707200300	200	300	250	350	63	160	110	90	200	160	110	1000	29.1



SABDRAIN 707 - GRATE

CODE	MATERIAL	DRAIN CM ²	A	H	H1	L	F	LOAD CLASS	KG
DR707GRATE100	ductile iron	81	147	20	25	500	498 x 7	C250	5.9
DR707GRATE150	ductile iron	137	197	20	31	500	498 x 7	C250	8.3
DR707GRATE200	ductile iron	191	247	20	36	500	498 x 7	C250	10.7